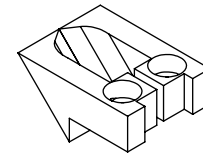
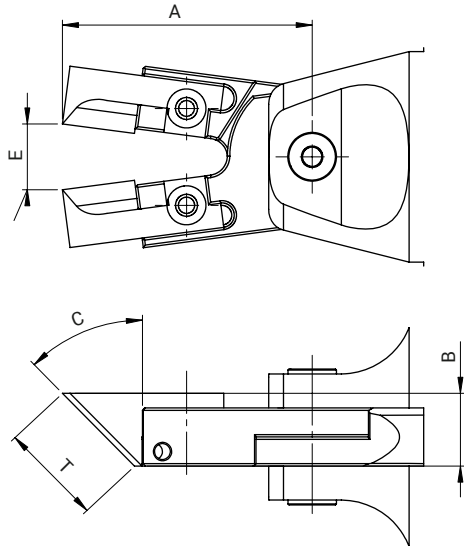
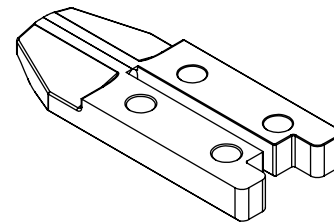
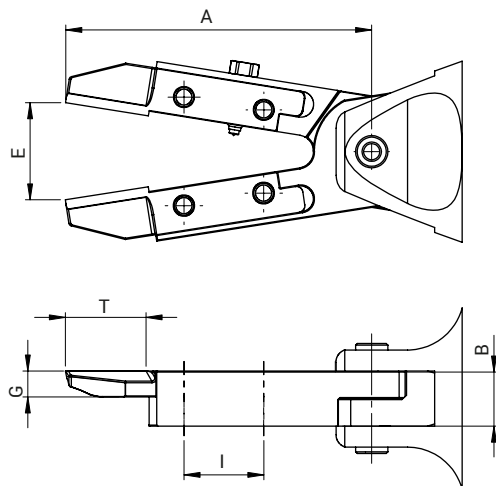


Lame speciali / Special blades

W.S2045.T21
W.S3045.T18



W.S2000.T20
W.S3000.T26



ARTICOLO ARTICLE	ATTUATORE NIPPER ACTUATOR	PORTA LAMA PART OF BODY BLADES	A [mm]	B [mm]	C	E [mm]	T [mm]	I [mm]	G [mm]	MATERIALE MATERIAL	PESO WEIGHT
W.S2045.T21	NB-20	BH-20-1	52	12	45°	13	21	-	-	Acciaio / Steel	15 g
W.S3045.T18	NB-30	BH-30-1	80	17	45°	21	18	-	-	Acciaio / Steel	70 g
W.S2000.T20	NB-20	BH-20-2	65	12	0	17	20	12	5	Acciaio / Steel	30 g
W.S3000.T26	NB-30	BH-30-2	92	17	0	24	26	12	8	Acciaio / Steel	85 g

QC
CAMBIO RAPIDO

BP
INTERFACCE

SQ
TRAVI QUADRE

NUT
DADI

TB
PROFILI

CC
STAFFE ANGOLARI TRAVI

SFP
PIASTRE DI FISSAGGIO

MB
MODULI PER STRUTTURA
E FISSAGGIO

CL - EA
GOMITI CON CRAVATTA

DS
DISTRIBUTORI

LVC - EAV - AVL
GAMBI E GOMITI
PER VENTOSA

CNT
PINZE MATEROZZA

ET
PROLUNGHE

AD
STAFFA FISSAGGIO PINZA

SG
PINZE MATEROZZA

AG
PINZE ANGOLARI

PG
PINZE PARALLELE

OFG
PINZE PNEUMATICHE

NB
ATTUATORI AUTOMATICI

W.N
LAME STANDARD

BH
CORPI PORTA LAMA
SPECIALI

W.S
LAME SPECIALI

CVA
CILINDRO ANTIROTAZIONE

SR - SA - SS
COMPENSATORI

V - SV
VENTOSE

RAP
RACCORDI

Lame speciali / Special blades

QC

CAMBIO RAPIDO

BP

INTERFACCE

SQ

TRAVI QUADRE

NUT

DADI

TB

PROFILI

CC

STAFFE ANGOLARI TRAVI

SFP

PIASTRE DI FISSAGGIO

MB

MODULI PER STRUTTURA E FISSAGGIO

CL - EA

GOMITI CON CRAVATTA

DS

DISTRIBUTORI

LVC - EAV - AVL

GAMBI E GOMITI PER VENTOSA

CNT

PINZE MATEROZZA

ET

PROLUNGHE

AD

STAFFA FISSAGGIO PINZA

SG

PINZE MATEROZZA

AG

PINZE ANGOLARI

PG

PINZE PARALLELE

OFG

PINZE PNEUMATICHE

NB

ATTUATORI AUTOMATICI

W.N

LAME STANDARD

BH

CORPI PORTA LAMA SPECIALI

W.S

LAME SPECIALI

CVA

CILINDRO ANTIROTAZIONE

SR - SA - SS

COMPENSATORI

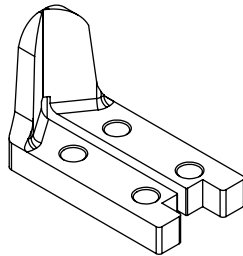
V - SV

VENTOSE

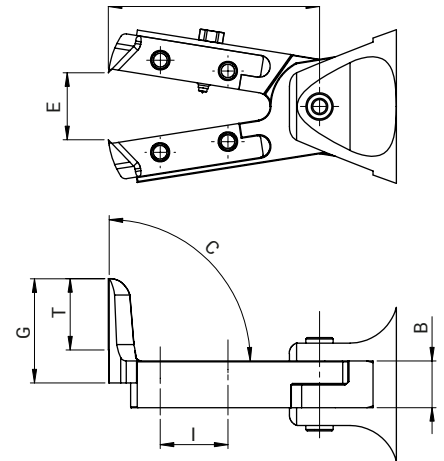
RAP

RACCORDI

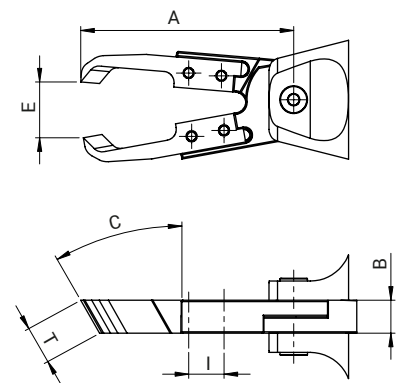
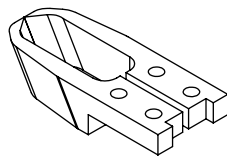
W.S2090.T12
W.S2090.T16
W.S2090.T20



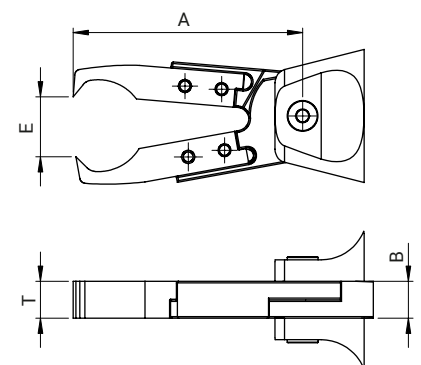
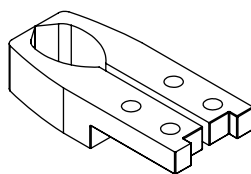
W.S3090.T16
W.S3090.T26
W.S3090.T30



W.S2030.T14

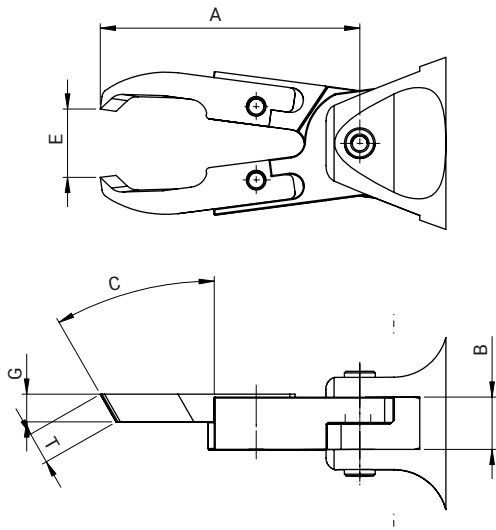


W.SF2000.T12

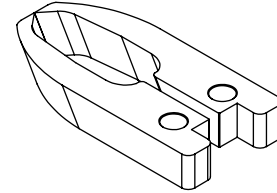


ARTICOLO ARTICLE	ATTUATORE NIPPER ACTUATOR	PORTA LAMA PART OF BODY BLADES	A [mm]	B [mm]	C	E [mm]	T [mm]	I [mm]	G [mm]	MATERIALE MATERIAL	PESO WEIGHT
W.S2090.T12	NB-20	BH-20-2	55	12	90°	15	12	12	20	Acciaio / Steel	40 g
W.S2090.T16	NB-20	BH-20-2	55	17	90°	15	16	12	24	Acciaio / Steel	45 g
W.S2090.T20	NB-20	BH-20-2	55	12	90°	15	20	12	28	Acciaio / Steel	50 g
W.S3090.T16	NB-30	BH-30-2	75	17	90°	20	16	25	28	Acciaio / Steel	90 g
W.S3090.T26	NB-30	BH-30-2	75	17	90°	20	26	25	38	Acciaio / Steel	100 g
W.S3090.T30	NB-30	BH-30-2	75	17	90°	20	30	25	42	Acciaio / Steel	110 g
W.S2030.T14	NB-20	BH-20-2	78	12	30°	20	14	12	12	Acciaio / Steel	50 g
W.SF2000.T12	NB-20	BH-20-2	75	12	0	20	12	12	-	Acciaio / Steel	65 g

Lame speciali / Special blades



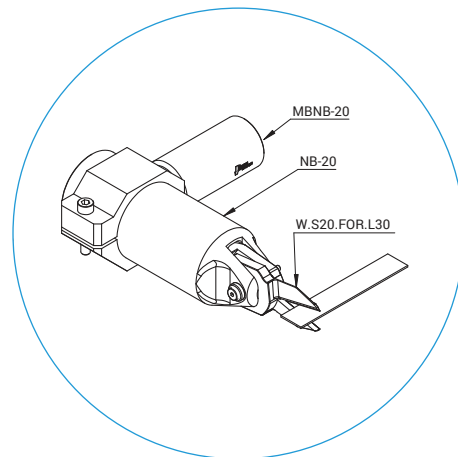
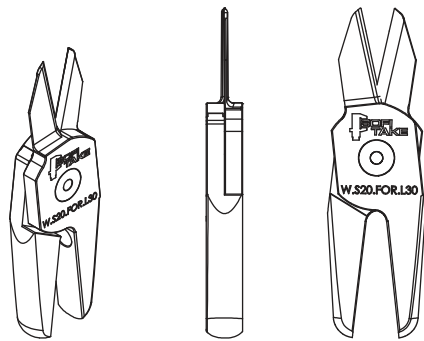
W.SF3000.T9
W.SF3000.T10
W.SF3000.T17



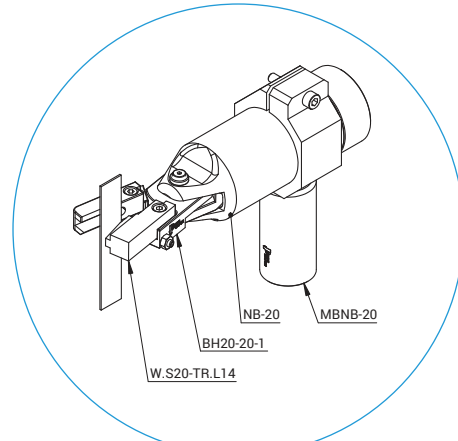
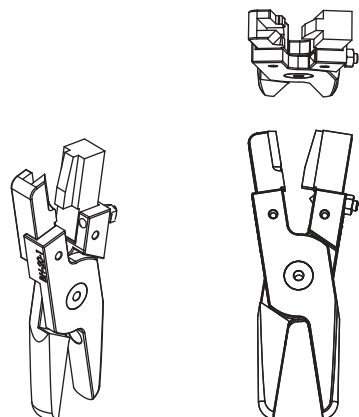
ARTICOLO ARTICLE	ATTUATORE NIPPER ACTUATOR	PORTA LAMA PART OF BODY BLADES	A [mm]	B [mm]	C °	E [mm]	T [mm]	I [mm]	G [mm]	MATERIALE MATERIAL	PESO WEIGHT
W.SF3000.T9	NB-30	BH-30-1	80	17	30°	21	9	-	-	Acciaio / Steel	75 g
W.SF3000.T10	NB-30	BH-30-1	85	17	30°	22	10	-	17	Acciaio / Steel	75 g
W.SF3000.T17	NB-30	BH-30-2	80	17	30°	21	17	-	8	Acciaio / Steel	110 g

esempi di applicazioni e di utilizzo / application example

Esempio FORBICE / Esempio FORBICE



Esempio TRANCIA / Esempio TRANCIA



QC
CAMBIO RAPIDO

BP
INTERFACCIE

SQ
TRAVI QUADRE

NUT
DADI

TB
PROFILI

CC
STAFFE ANGOLARI TRAVI

SFP
PIASTRE DI FISSAGGIO

MB
MODULI PER STRUTTURA
E FISSAGGIO

CL - EA
GOMITI CON CRAVATTA

DS
DISTRIBUTORI

LVC - EAV - AVL
GAMBI E GOMITI
PER VENTOSA

CNT
PINZE MATEROZZA

ET
PROLUNGHE

AD
STAFFA FISSAGGIO PINZA

SG
PINZE MATEROZZA

AG
PINZE ANGOLARI

PG
PINZE PARALLELE

OFG
PINZE PNEUMATICHE

NB
ATTUATORI AUTOMATICI

W.N
LAME STANDARD

BH
CORPI PORTA LAMA
SPECIALI

W.S
LAME SPECIALI

CVA
CILINDRO ANTIROTAZIONE

SR - SA - SS
COMPENSATORI

V - SV
VENTOSE

RAP
RACCORDI