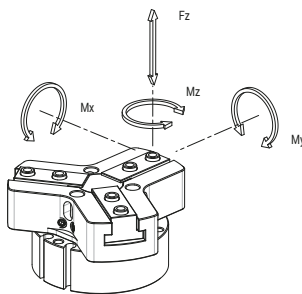
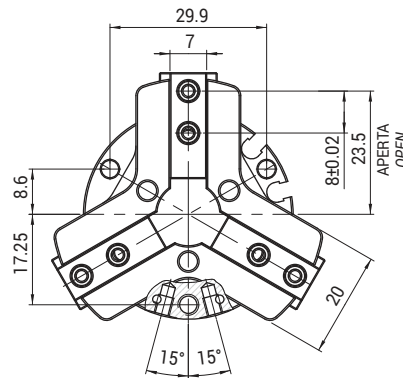
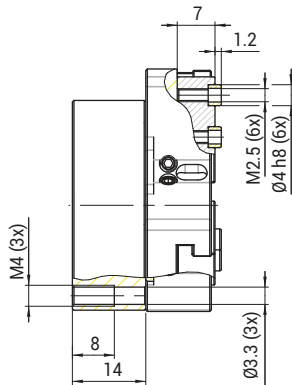
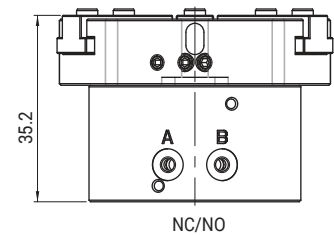
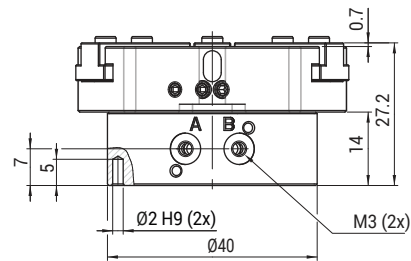
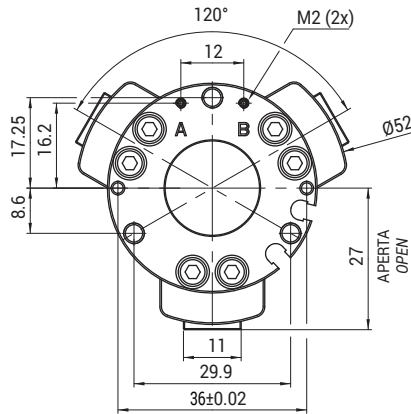


## Pinze a tre griffe - Taglia 40 / 3 jaws grippers - Dimension size 40



Fz s, Mx s, My s, Mz s =  
Carichi ammissibili / Maximum  
admissible loads and torques

ARTICOLO / ARTICLE	Fz s (N)	Mx s (Nm)	My s (Nm)	Mz s (Nm)
PGT 4005	200	2.5	4	2.8

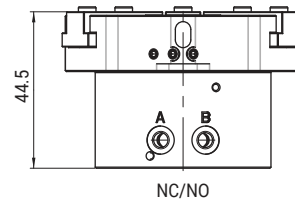
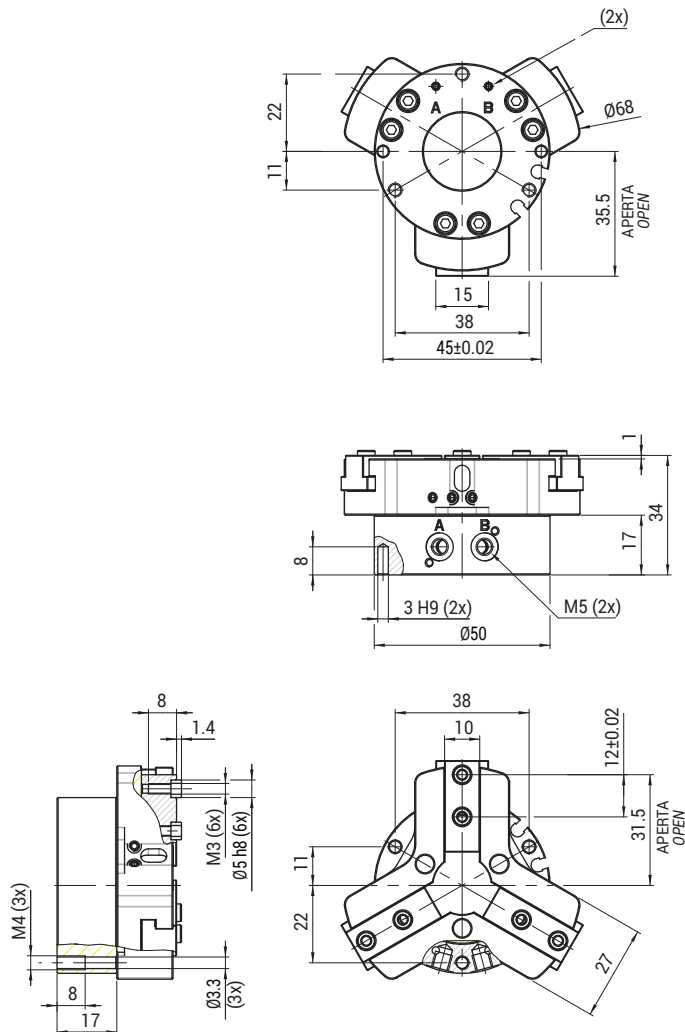
ARTICOLO / ARTICLE	PRESSIONE DI ESERCIZIO / PRESSURE RANGE	TEMPERATURA DI ESERCIZIO / TEMPERATURE RANGE	CORSA PER GRIFFA / STROKE FOR JAW [mm]	FORZA DI SERRAGGIO / TOTAL FORCE AT 6 BAR	FORZA TOTALE IN CHIUSURA / TOTAL FORCE AT 6 BAR	± RIPETIBILITÀ / ---	MATERIALE / MATERIAL	PESO / WEIGHT
PGT 4005	~2 ÷ 8 bar	-5~+60°C	2.5	202 (N)	181 (N)	≤ 0.02	Alluminio / Aluminium	144 g
PGT 4005-NC	~4 ÷ 8 bar	-5~+60°C	2.5	100 (N)	80 (N)	≤ 0.02	Alluminio / Aluminium	132 g
PGT 4005-NO	~4 ÷ 8 bar	-5~+60°C	2.5	300 (N)	280 (N)	≤ 0.02	Alluminio / Aluminium	130 g

- QC**  
CAMBIO RAPIDO
- BP**  
INTERFACCE
- SQ**  
TRAVI QUADRE
- NUT**  
DADI
- TB**  
PROFILI
- CC**  
STAFFE ANGOLARI TRAVI
- SFP**  
PIASTRE DI FISSAGGIO
- MB**  
MODULI PER STRUTTURA E FISSAGGIO
- CL - EA**  
GOMITI CON CRAVATTA
- DS**  
DISTRIBUTORI
- LVC - EAV - AVL**  
GAMBI E GOMITI PER VENTOSA
- CNT**  
PINZE MATEROZZA
- ET**  
PROLUNGHE
- AD**  
STAFFA FISSAGGIO PINZA
- SG**  
PINZE MATEROZZA
- AG**  
PINZE ANGOLARI
- PG**  
PINZE PARALLELE
- OFG**  
PINZE PNEUMATICHE
- NB**  
ATTUATORI AUTOMATICI
- W.N**  
LAME STANDARD
- BH**  
CORPI PORTA LAMA SPECIALI
- W.S**  
LAME SPECIALI
- CVA**  
CILINDRO ANTIROTAZIONE
- SR - SA - SS**  
COMPENSATORI
- V - SV**  
VENTOSE
- RAP**  
RACCORDI

# PGT-50



## Pinze a tre griffe - Taglia 50 / 3 jaws grippers - Dimension size 50

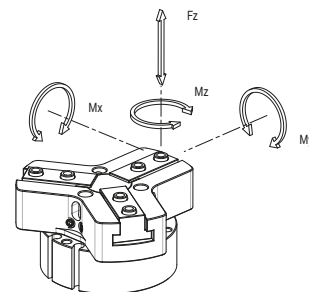


Fz s, Mx s, My s, Mz s =  
Carichi ammissibili / Maximum  
admissible loads and torques

ARTICOLO ARTICLE	Fz s (N)	Mx s (Nm)	My s (Nm)	Mz s (Nm)
PGT 5008	400	7	7.3	7.7

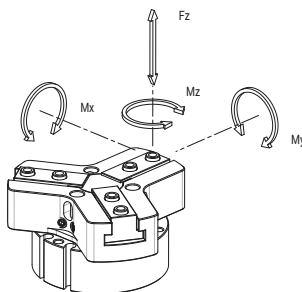
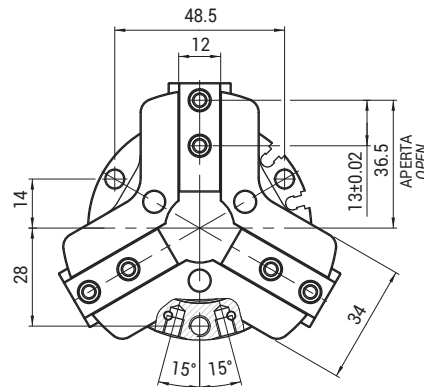
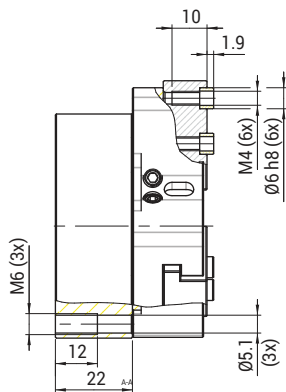
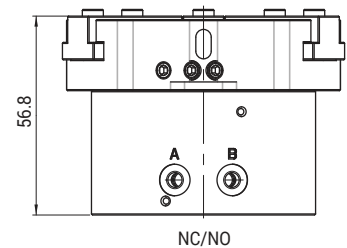
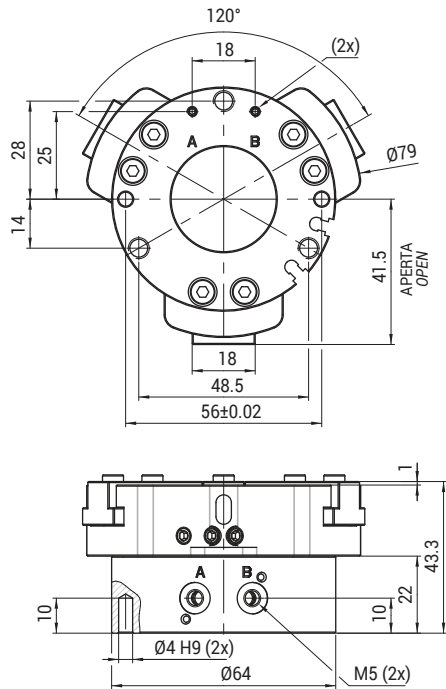
  

ARTICOLO ARTICLE	PRESSIONE DI ESERCIZIO PRESSURE RANGE	TEMPERATURA DI ESERCIZIO TEMPERATURE RANGE	CORSA PER GRIFFA STROKE FOR JAW [mm]	FORZA DI SERRAGGIO TOTAL FORCE AT 6 BAR	FORZA TOTALE IN CHIUSURA TOTAL FORCE AT 6 BAR	± RIPETIBILITÀ ---	MATERIALE MATERIAL	PESO WEIGHT
PGT 5008	~2 ÷ 8 bar	-5~+60°C	4	390 (N)	346 (N)	≤ 0.02	Alluminio / Aluminium	240 g
PGT 5008-NC	~4 ÷ 8 bar	-5~+60°C	4	250 (N)	480 (N)	≤ 0.02	Alluminio / Aluminium	280 g
PGT 5008-NO	~4 ÷ 8 bar	-5~+60°C	4	520 (N)	210 (N)	≤ 0.02	Alluminio / Aluminium	275 g



- QC**  
CAMBIO RAPIDO
- BP**  
INTERFACCE
- SQ**  
TRAVI QUADRE
- NUT**  
DADI
- TB**  
PROFILI
- CC**  
STAFFE ANGOLARI TRAVI
- SFP**  
PIASTRE DI FISSAGGIO
- MB**  
MODULI PER STRUTTURA E FISSAGGIO
- CL - EA**  
GOMITI CON CRAVATTA
- DS**  
DISTRIBUTORI
- LVC - EAV - AVL**  
GAMBI E GOMITI PER VENTOSA
- CNT**  
PINZE MATEROZZA
- ET**  
PROLUNGHE
- AD**  
STAFFA FISSAGGIO PINZA
- SG**  
PINZE MATEROZZA
- AG**  
PINZE ANGOLARI
- PG**  
PINZE PARALLELE
- OFG**  
PINZE PNEUMATICHE
- NB**  
ATTUATORI AUTOMATICI
- W.N**  
LAME STANDARD
- BH**  
CORPI PORTA LAMA SPECIALI
- W.S**  
LAME SPECIALI
- CVA**  
CILINDRO ANTIROTAZIONE
- SR - SA - SS**  
COMPENSATORI
- V - SV**  
VENTOSE
- RAP**  
RACCORDI

## Pinze a tre griffe - Taglia 64 / 3 jaws grippers - Dimension size 64



Fz s, Mx s, My s, Mz s =  
Carichi ammissibili / Maximum  
admissible loads and torques

ARTICOLO / ARTICLE	Fz s (N)	Mx s (Nm)	My s (Nm)	Mz s (Nm)				
<b>PGT 6412</b>	600	13	14	14				
ARTICOLO / ARTICLE	PRESSIONE DI ESERCIZIO / PRESSURE RANGE	TEMPERATURA DI ESERCIZIO / TEMPERATURE RANGE	CORSA PER GRIFFA / STROKE FOR JAW [mm]	FORZA DI SERRAGGIO / TOTAL FORCE AT 6 BAR	FORZA TOTALE IN CHIUSURA / TOTAL FORCE AT 6 BAR	± RIPETIBILITÀ / ---	MATERIALE / MATERIAL	PESO / WEIGHT
<b>PGT 6412</b>	~2 ÷ 8 bar	-5~+60°C	6	726 (N)	670 (N)	≤ 0.02	Alluminio / Aluminium	461 g
<b>PGT 6412-NC</b>	~4 ÷ 8 bar	-5~+60°C	6	440 (N)	960 (N)	≤ 0.02	Alluminio / Aluminium	560 g
<b>PGT 6412-NO</b>	~4 ÷ 8 bar	-5~+60°C	6	970 (N)	380 (N)	≤ 0.02	Alluminio / Aluminium	527 g

- QC**  
CAMBIO RAPIDO
- BP**  
INTERFACCE
- SQ**  
TRAVI QUADRE
- NUT**  
DADI
- TB**  
PROFILI
- CC**  
STAFFE ANGOLARI TRAVI
- SFP**  
PIASTRE DI FISSAGGIO
- MB**  
MODULI PER STRUTTURA E FISSAGGIO
- CL - EA**  
GOMITI CON CRAVATTA
- DS**  
DISTRIBUTORI
- LVC - EAV - AVL**  
GAMBI E GOMITI PER VENTOSA
- CNT**  
PINZE MATEROZZA
- ET**  
PROLUNGHE
- AD**  
STAFFA FISSAGGIO PINZA
- SG**  
PINZE MATEROZZA
- AG**  
PINZE ANGOLARI
- PG**  
PINZE PARALLELE
- OFG**  
PINZE PNEUMATICHE
- NB**  
ATTUATORI AUTOMATICI
- W.N**  
LAME STANDARD
- BH**  
CORPI PORTA LAMA SPECIALI
- W.S**  
LAME SPECIALI
- CVA**  
CILINDRO ANTIROTAZIONE
- SR - SA - SS**  
COMPENSATORI
- V - SV**  
VENTOSE
- RAP**  
RACCORDI

# PGT-80



## Pinze a tre griffe - Taglia 80 / 3 jaws grippers - Dimension size 80

**QC**  
CAMBIO RAPIDO

**BP**  
INTERFACCE

**SQ**  
TRAVI QUADRE

**NUT**  
DADI

**TB**  
PROFILI

**CC**  
STAFFE ANGOLARI TRAVI

**SFP**  
PIASTRE DI FISSAGGIO

**MB**  
MODULI PER STRUTTURA E FISSAGGIO

**CL - EA**  
GOMITI CON CRAVATTA

**DS**  
DISTRIBUTORI

**LVC - EAV - AVL**  
GAMBI E GOMITI PER VENTOSA

**CNT**  
PINZE MATEROZZA

**ET**  
PROLUNGHE

**AD**  
STAFFA FISSAGGIO PINZA

**SG**  
PINZE MATEROZZA

**AG**  
PINZE ANGOLARI

**PG**  
PINZE PARALLELE

**OFG**  
PINZE PNEUMATICHE

**NB**  
ATTUATORI AUTOMATICI

**W.N**  
LAME STANDARD

**BH**  
CORPI PORTA LAMA SPECIALI

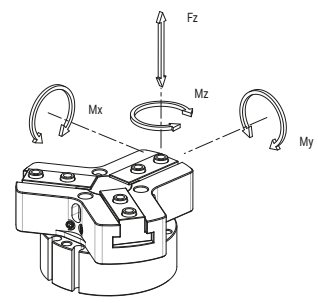
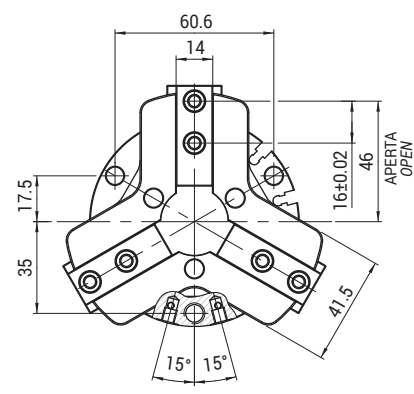
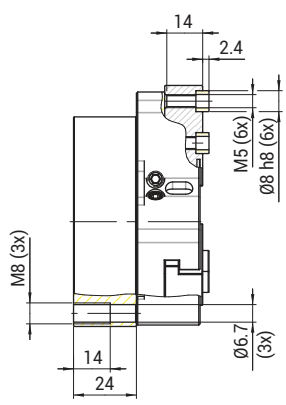
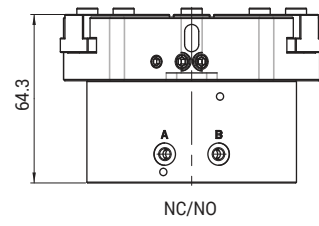
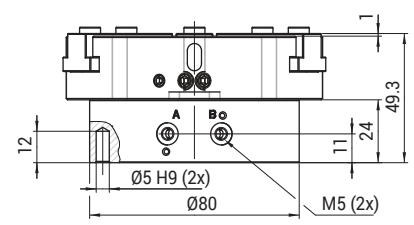
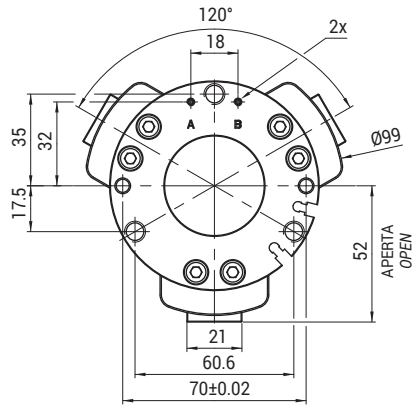
**W.S**  
LAME SPECIALI

**CVA**  
CILINDRO ANTIROTAZIONE

**SR - SA - SS**  
COMPENSATORI

**V - SV**  
VENTOSE

**RAP**  
RACCORDI



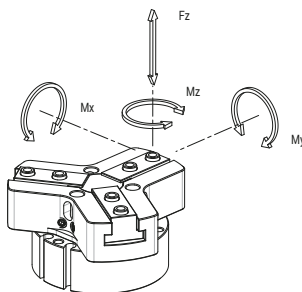
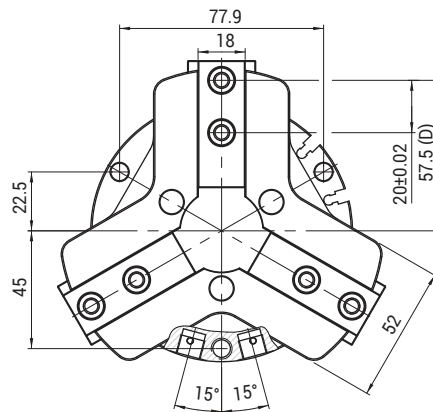
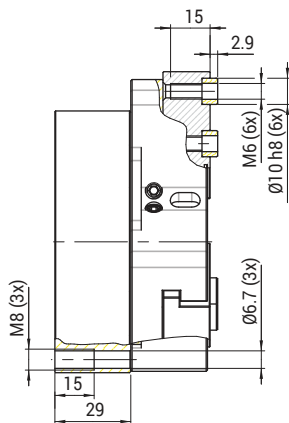
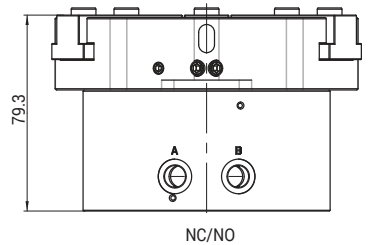
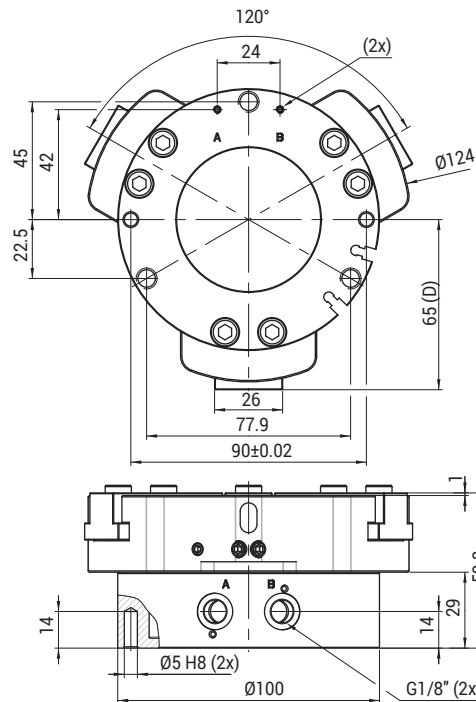
Fz s, Mx s, My s, Mz s =  
Carichi ammissibili / Maximum  
admissible loads and torques

ARTICOLO / ARTICLE	Fz s (N)	Mx s (Nm)	My s (Nm)	Mz s (Nm)
<b>PGT 8016</b>	1000	26	27	24

ARTICOLO / ARTICLE	PRESSIONE DI ESERCIZIO / PRESSURE RANGE	TEMPERATURA DI ESERCIZIO / TEMPERATURE RANGE	CORSA PER GRIFFA / STROKE FOR JAW [mm]	FORZA DI SERRAGGIO / TOTAL FORCE AT 6 BAR	FORZA TOTALE IN CHIUSURA / TOTAL FORCE AT 6 BAR	± RIPETIBILITÀ / ---	MATERIALE / MATERIAL	PESO / WEIGHT
<b>PGT 8016</b>	~2 ÷ 8 bar	-5~+60°C	8	1078 (N)	980 (N)	≤ 0.02	Alluminio / Aluminium	796 g
<b>PGT 8016-NC</b>	~4 ÷ 8 bar	-5~+60°C	8	740 (N)	1310 (N)	≤ 0.02	Alluminio / Aluminium	987 g
<b>PGT 8016-NO</b>	~4 ÷ 8 bar	-5~+60°C	8	1350 (N)	640 (N)	≤ 0.02	Alluminio / Aluminium	934 g

## Pinze a tre griffe - Taglia 100 / 3 jaws grippers - Dimension size 100



Fz s, Mx s, My s, Mz s =  
Carichi ammissibili / Maximum  
admissible loads and torques

ARTICOLO / ARTICLE	Fz s (N)	Mx s (Nm)	My s (Nm)	Mz s (Nm)
<b>PGT 10020</b>	1500	58	65	65

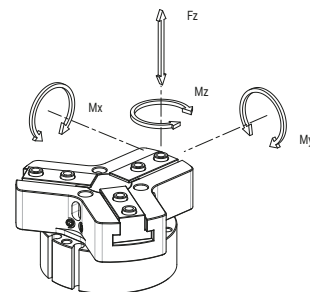
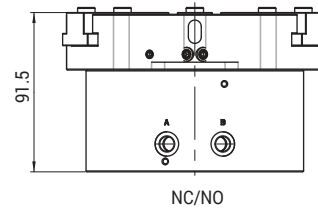
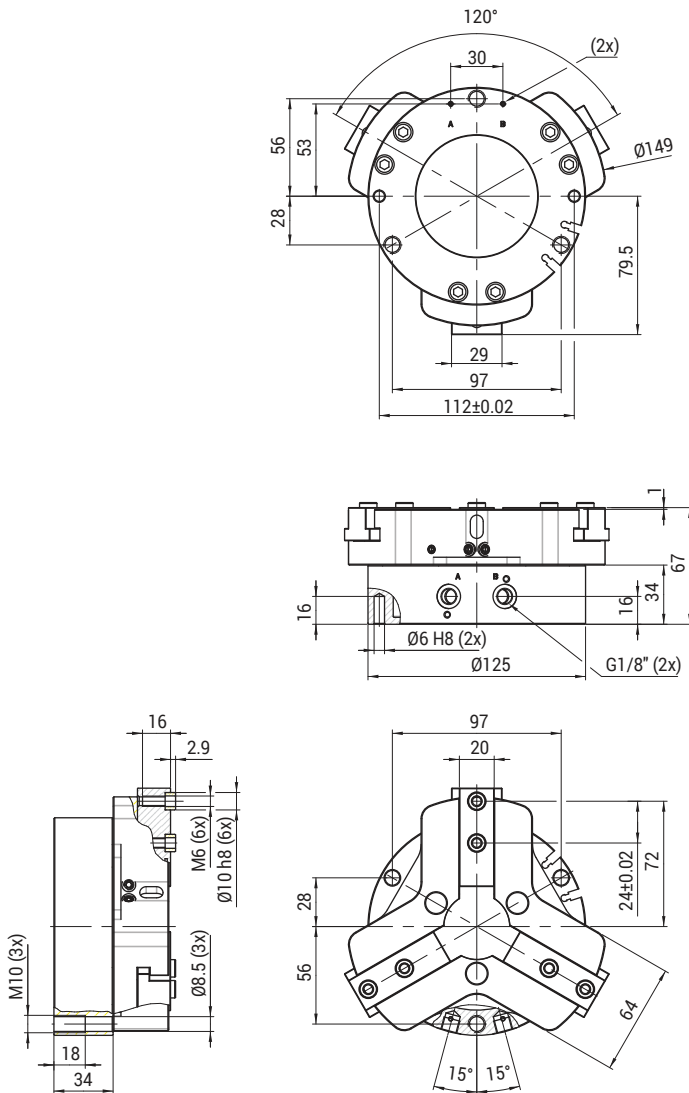
ARTICOLO / ARTICLE	PRESSIONE DI ESERCIZIO / PRESSURE RANGE	TEMPERATURA DI ESERCIZIO / TEMPERATURE RANGE	CORSA PER GRIFFA / STROKE FOR JAW [mm]	FORZA DI SERRAGGIO / TOTAL FORCE AT 6 BAR	FORZA TOTALE IN CHIUSURA / TOTAL FORCE AT 6 BAR	± RIPETIBILITÀ / ---	MATERIALE / MATERIAL	PESO / WEIGHT
<b>PGT 10020</b>	~2 ÷ 8 bar	-5~+60°C	10	2165 (N)	2030 (N)	≤ 0.02	Alluminio / Aluminium	1.483 g
<b>PGT 10020-NC</b>	~4 ÷ 8 bar	-5~+60°C	10	1570 (N)	2620 (N)	≤ 0.02	Alluminio / Aluminium	1.790 g
<b>PGT 10020-NO</b>	~4 ÷ 8 bar	-5~+60°C	10	2750 (N)	1440 (N)	≤ 0.02	Alluminio / Aluminium	1.755 g

- QC**  
CAMBIO RAPIDO
- BP**  
INTERFACCE
- SQ**  
TRAVI QUADRE
- NUT**  
DADI
- TB**  
PROFILI
- CC**  
STAFFE ANGOLARI TRAVI
- SFP**  
PIASTRE DI FISSAGGIO
- MB**  
MODULI PER STRUTTURA E FISSAGGIO
- CL - EA**  
GOMITI CON CRAVATTA
- DS**  
DISTRIBUTORI
- LVC - EAV - AVL**  
GAMBI E GOMITI PER VENTOSA
- CNT**  
PINZE MATEROZZA
- ET**  
PROLUNGHE
- AD**  
STAFFA FISSAGGIO PINZA
- SG**  
PINZE MATEROZZA
- AG**  
PINZE ANGOLARI
- PG**  
PINZE PARALLELE
- OFG**  
PINZE PNEUMATICHE
- NB**  
ATTUATORI AUTOMATICI
- W.N**  
LAME STANDARD
- BH**  
CORPI PORTA LAMA SPECIALI
- W.S**  
LAME SPECIALI
- CVA**  
CILINDRO ANTIROTAZIONE
- SR - SA - SS**  
COMPENSATORI
- V - SV**  
VENTOSE
- RAP**  
RACCORDI

# PGT-125



## Pinze a tre griffe - Taglia 125 / 3 jaws grippers - Dimension size 125



Fz s, Mx s, My s, Mz s =  
Carichi ammissibili / Maximum  
admissible loads and torques

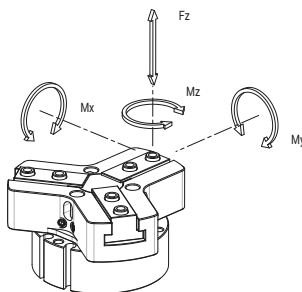
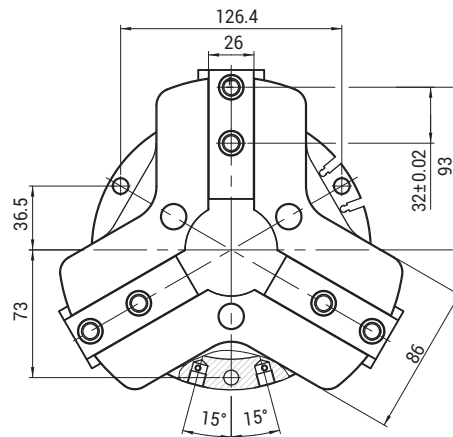
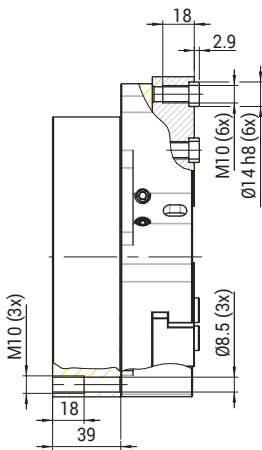
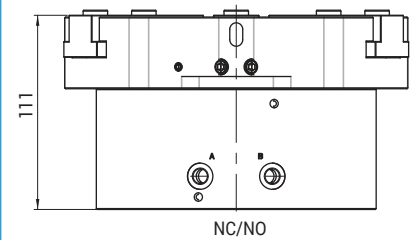
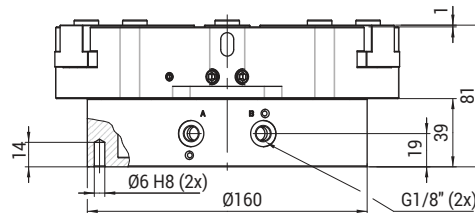
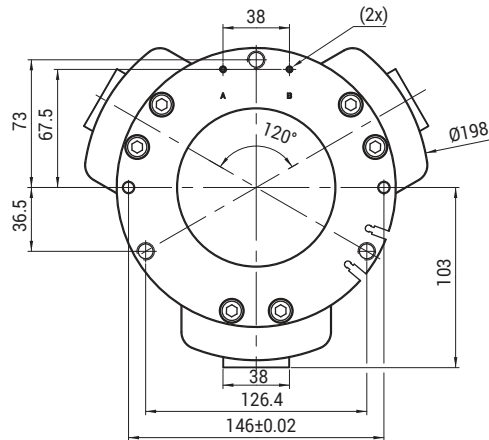
ARTICOLO / ARTICLE	Fz s (N)	Mx s (Nm)	My s (Nm)	Mz s (Nm)
PGT 12526	2500	100	120	120

ARTICOLO / ARTICLE	PRESSIONE DI ESERCIZIO / PRESSURE RANGE	TEMPERATURA DI ESERCIZIO / TEMPERATURE RANGE	CORSA PER GRIFFA / STROKE FOR JAW [mm]	FORZA DI SERRAGGIO / TOTAL FORCE AT 6 BAR	FORZA TOTALE IN CHIUSURA / TOTAL FORCE AT 6 BAR	± RIPETIBILITÀ / ---	MATERIALE / MATERIAL	PESO / WEIGHT
PGT 12526	~2 ÷ 8 bar	-5~+60°C	13	3594 (N)	3370 (N)	≤ 0.02	Alluminio / Aluminium	2.220 g
PGT 12526-NC	~4 ÷ 8 bar	-5~+60°C	13	2760 (N)	4200 (N)	≤ 0.02	Alluminio / Aluminium	3.005 g
PGT 12526-NO	~4 ÷ 8 bar	-5~+60°C	13	4430 (N)	2530 (N)	≤ 0.02	Alluminio / Aluminium	2.752 g

- QC**  
CAMBIO RAPIDO
- BP**  
INTERFACCIE
- SQ**  
TRAVI QUADRE
- NUT**  
DADI
- TB**  
PROFILI
- CC**  
STAFFE ANGOLARI TRAVI
- SFP**  
PIASTRE DI FISSAGGIO
- MB**  
MODULI PER STRUTTURA E FISSAGGIO
- CL - EA**  
GOMITI CON CRAVATTA
- DS**  
DISTRIBUTORI
- LVC - EAV - AVL**  
GAMBI E GOMITI PER VENTOSA
- CNT**  
PINZE MATEROZZA
- ET**  
PROLUNGHE
- AD**  
STAFFA FISSAGGIO PINZA
- SG**  
PINZE MATEROZZA
- AG**  
PINZE ANGOLARI
- PG**  
PINZE PARALLELE
- OFG**  
PINZE PNEUMATICHE
- NB**  
ATTUATORI AUTOMATICI
- W.N**  
LAME STANDARD
- BH**  
CORPI PORTA LAMA SPECIALI
- W.S**  
LAME SPECIALI
- CVA**  
CILINDRO ANTIROTAZIONE
- SR - SA - SS**  
COMPENSATORI
- V - SV**  
VENTOSE
- RAP**  
RACCORDI

## Pinze a tre griffe - Taglia 160 / 3 jaws grippers - Dimension size 160



Fz s, Mx s, My s, Mz s =  
Carichi ammissibili / Maximum  
admissible loads and torques

ARTICOLO / ARTICLE	Fz s (N)	Mx s (Nm)	My s (Nm)	Mz s (Nm)
<b>PGT 16032</b>	1500	58	65	65

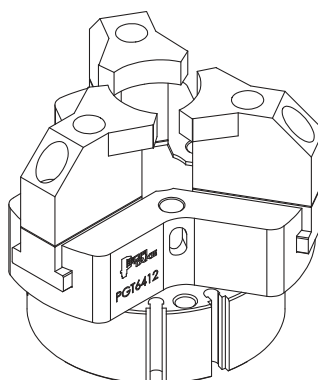
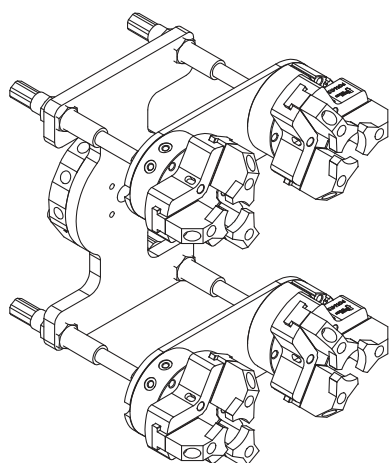
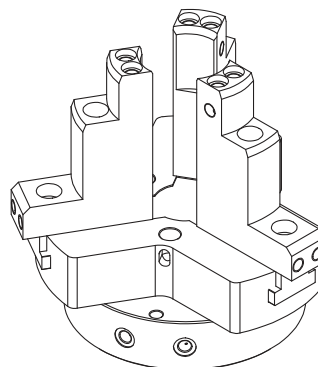
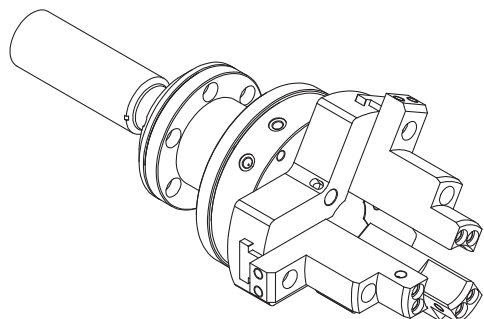
  

ARTICOLO / ARTICLE	PRESSIONE DI ESERCIZIO / PRESSURE RANGE	TEMPERATURA DI ESERCIZIO / TEMPERATURE RANGE	CORSA PER GRIFFA / STROKE FOR JAW [mm]	FORZA DI SERRAGGIO / TOTAL FORCE AT 6 BAR	FORZA TOTALE IN CHIUSURA / TOTAL FORCE AT 6 BAR	± RIPETIBILITÀ / ---	MATERIALE / MATERIAL	PESO / WEIGHT
<b>PGT 16032</b>	~2 ÷ 8 bar	-5~+60°C	16	5300 (N)	5780 (N)	≤ 0.02	Alluminio / Aluminium	4.714 g
<b>PGT 16032-NC</b>	~4 ÷ 8 bar	-5~+60°C	16	4620 (N)	6450 (N)	≤ 0.02	Alluminio / Aluminium	6.504 g
<b>PGT 16032-NO</b>	~4 ÷ 8 bar	-5~+60°C	16	6930 (N)	4140 (N)	≤ 0.02	Alluminio / Aluminium	5.851 g

- QC**  
CAMBIO RAPIDO
- BP**  
INTERFACCE
- SQ**  
TRAVI QUADRE
- NUT**  
DADI
- TB**  
PROFILI
- CC**  
STAFFE ANGOLARI TRAVI
- SFP**  
PIASTRE DI FISSAGGIO
- MB**  
MODULI PER STRUTTURA E FISSAGGIO
- CL - EA**  
GOMITI CON CRAVATTA
- DS**  
DISTRIBUTORI
- LVC - EAV - AVL**  
GAMBI E GOMITI PER VENTOSA
- CNT**  
PINZE MATEROZZA
- ET**  
PROLUNGHE
- AD**  
STAFFA FISSAGGIO PINZA
- SG**  
PINZE MATEROZZA
- AG**  
PINZE ANGOLARI
- PG**  
PINZE PARALLELE
- OFG**  
PINZE PNEUMATICHE
- NB**  
ATTUATORI AUTOMATICI
- W.N**  
LAME STANDARD
- BH**  
CORPI PORTA LAMA SPECIALI
- W.S**  
LAME SPECIALI
- CVA**  
CILINDRO ANTIROTAZIONE
- SR - SA - SS**  
COMPENSATORI
- V - SV**  
VENTOSE
- RAP**  
RACCORDI



# PGT - ESEMPI DI UTILIZZO / PGT - APPLICATION EXSAMPLE



**QC**  
CAMBIO RAPIDO

**BP**  
INTERFACCE

**SQ**  
TRAVI QUADRE

**NUT**  
DADI

**TB**  
PROFILI

**CC**  
STAFFE ANGOLARI TRAVI

**SFP**  
PIASTRE DI FISSAGGIO

**MB**  
MODULI PER STRUTTURA  
E FISSAGGIO

**CL - EA**  
GOMITI CON CRAVATTA

**DS**  
DISTRIBUTORI

**LVC - EAV - AVL**  
GAMBI E GOMITI  
PER VENTOSA

**CNT**  
PINZE MATEROZZA

**ET**  
PROLUNGHE

**AD**  
STAFFA FISSAGGIO PINZA

**SG**  
PINZE MATEROZZA

**AG**  
PINZE ANGOLARI

**PG**  
PINZE PARALLELE

**OFG**  
PINZE PNEUMATICHE

**NB**  
ATTUATORI AUTOMATICI

**W.N**  
LAME STANDARD

**BH**  
CORPI PORTA LAMA  
SPECIALI

**W.S**  
LAME SPECIALI

**CVA**  
CILINDRO ANTIROTAZIONE

**SR - SA - SS**  
COMPENSATORI

**V - SV**  
VENTOSE

**RAP**  
RACCORDI

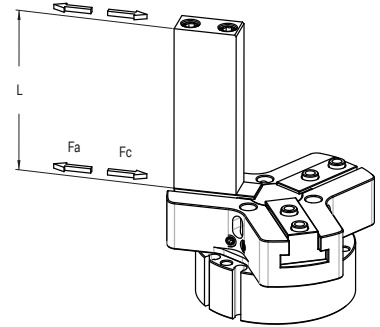
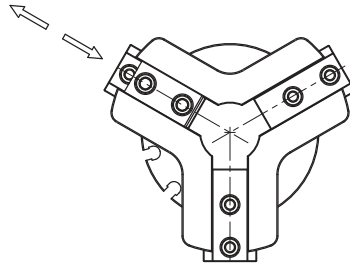


# PGT - FORZA DI SERRAGGIO PER SINGOLA GRIFFA / PGT - GRIPPING FORCE FOR SINGLE JAW

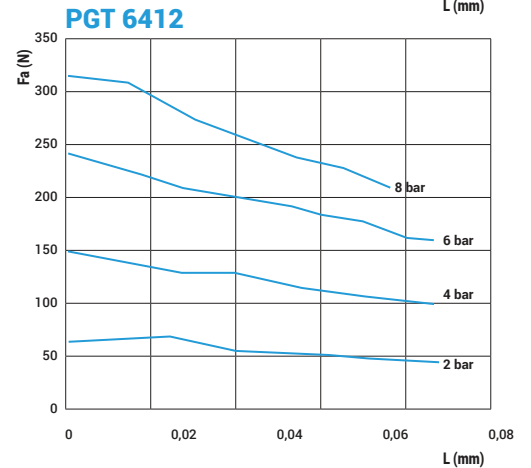
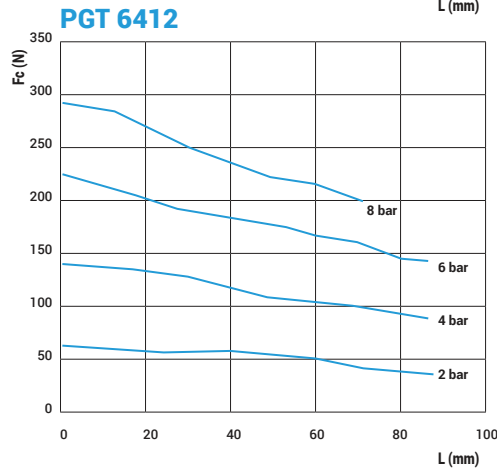
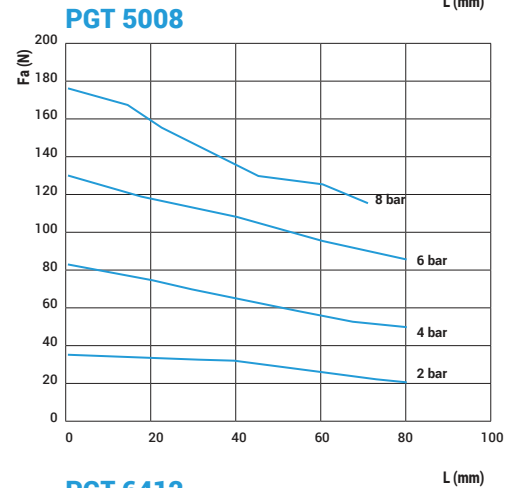
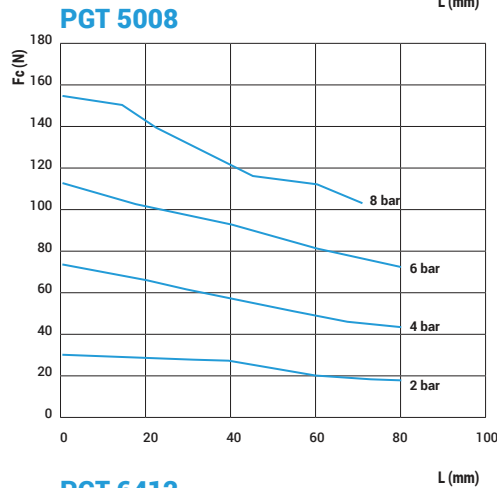
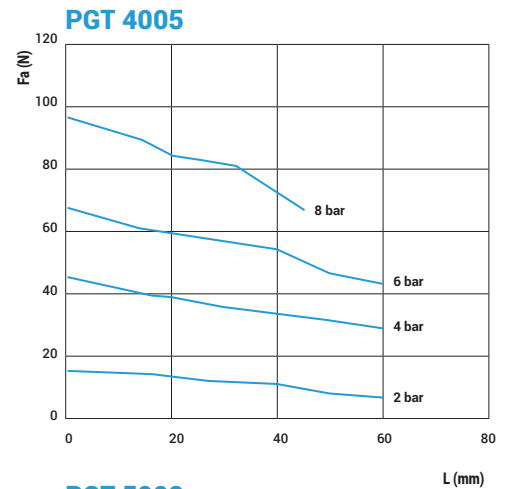
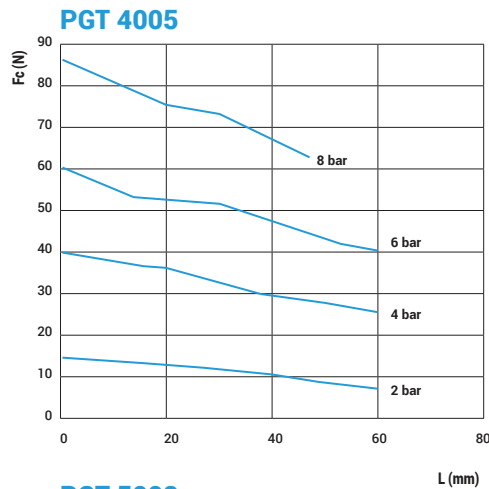
Forza di serraggio calcolata nel seguente modo:  
 $F_c \text{ totale} = F_c \times 3$   
 $F_a \text{ totale} = F_a \times 3$

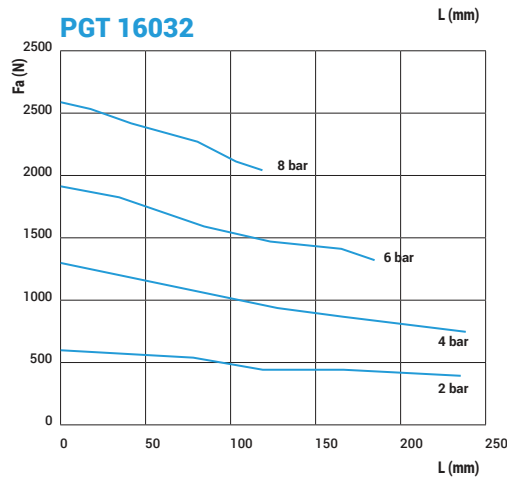
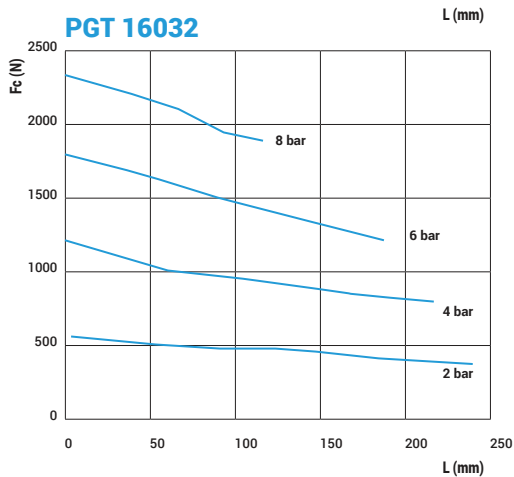
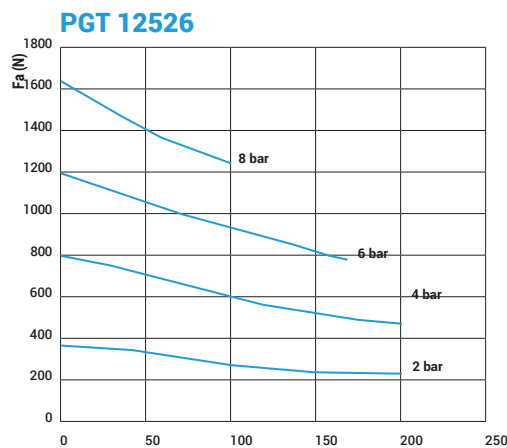
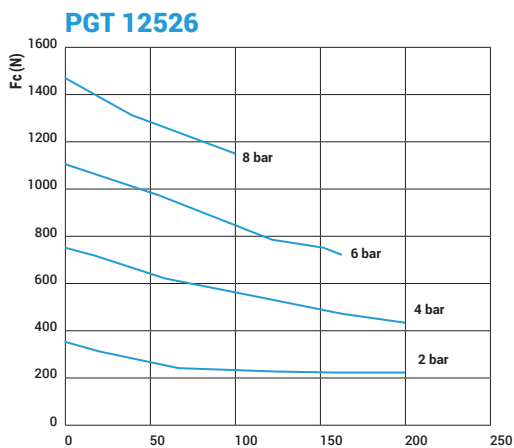
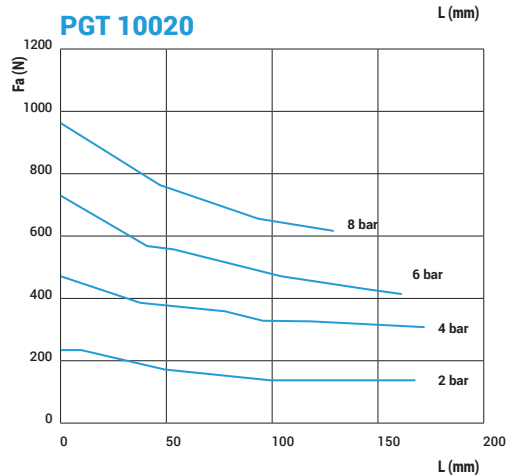
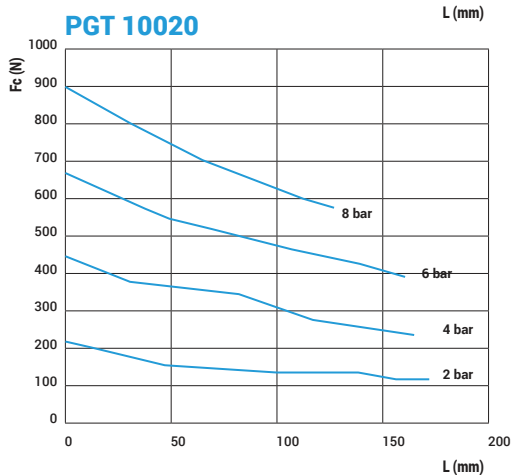
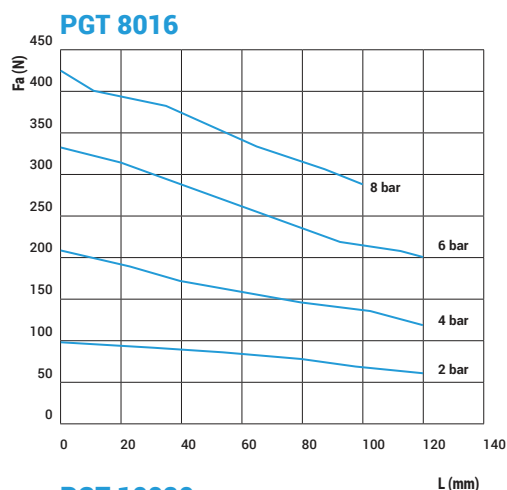
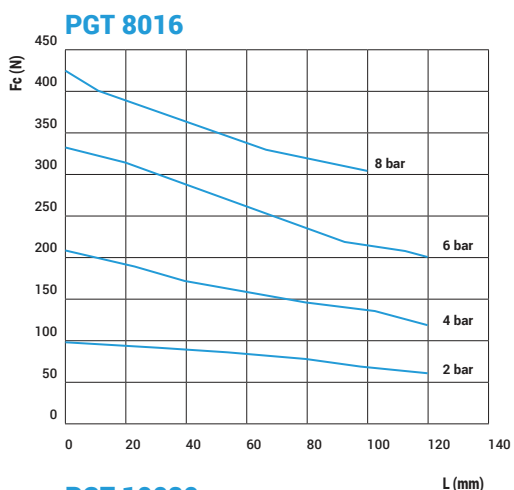
*The total gripping force has to be calculated as follows total*  
 $F_c = F_c \times 3$   
 $F_a = F_a \times 3$

$F_c$  = Forza di presa in chiusura  
 $F_a$  = Forza di presa in apertura  
 $L$  = Distanza dal piano griffe  
 $F_c$  = Closing gripping force  
 $F_a$  = Opening gripping force  
 $L$  = Gripping point length



- QC**  
CAMBIO RAPIDO
- BP**  
INTERFACCE
- SQ**  
TRAVI QUADRE
- NUT**  
DADI
- TB**  
PROFILII
- CC**  
STAFFE ANGOLARI TRAVI
- SFP**  
PIASTRE DI FISSAGGIO
- MB**  
MODULI PER STRUTTURA E FISSAGGIO
- CL · EA**  
GOMITI CON CRAVATTA
- DS**  
DISTRIBUTORI
- LVC · EAV · AVL**  
GAMBI E GOMITI PER VENTOSA
- CNT**  
PINZE MATEROZZA
- ET**  
PROLUNGHE
- AD**  
STAFFA FISSAGGIO PINZA
- SG**  
PINZE MATEROZZA
- AG**  
PINZE ANGOLARI
- PG**  
PINZE PARALLELE
- OFG**  
PINZE PNEUMATICHE
- NB**  
ATTUATORI AUTOMATICI
- W.N**  
LAME STANDARD
- BH**  
CORPI PORTA LAMA SPECIALI
- W.S**  
LAME SPECIALI
- CVA**  
CILINDRO ANTIROTAZIONE
- SR - SA - SS**  
COMPENSATORI
- V - SV**  
VENTOSE
- RAP**  
RACCORDI

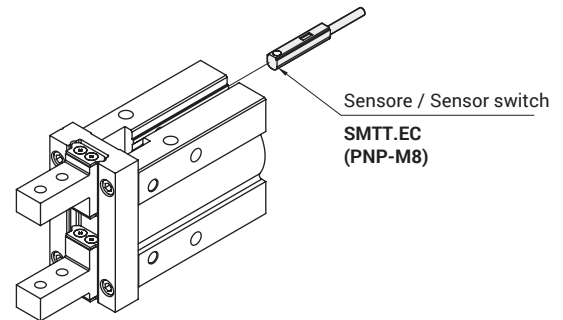




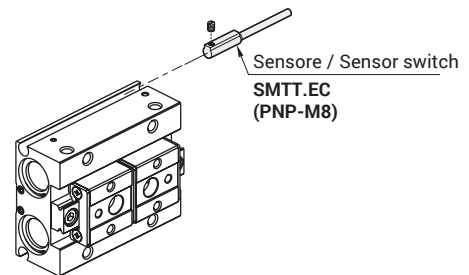
- QC**  
CAMBIO RAPIDO
- BP**  
INTERFACCIE
- SQ**  
TRAVI QUADRE
- NUT**  
DADI
- TB**  
PROFILI
- CC**  
STAFFE ANGOLARI TRAVI
- SFP**  
PIASTRE DI FISSAGGIO
- MB**  
MODULI PER STRUTTURA E FISSAGGIO
- CL - EA**  
GOMITI CON CRAVATTA
- DS**  
DISTRIBUTORI
- LVC - EAV - AVL**  
GAMBI E GOMITI PER VENTOSA
- CNT**  
PINZE MATEROZZA
- ET**  
PROLUNGHE
- AD**  
STAFFA FISSAGGIO PINZA
- SG**  
PINZE MATEROZZA
- AG**  
PINZE ANGOLARI
- PG**  
PINZE PARALLELE
- OFG**  
PINZE PNEUMATICHE
- NB**  
ATTUATORI AUTOMATICI
- W.N**  
LAME STANDARD
- BH**  
CORPI PORTA LAMA SPECIALI
- W.S**  
LAME SPECIALI
- CVA**  
CILINDRO ANTIROTAZIONE
- SR - SA - SS**  
COMPENSATORI
- V - SV**  
VENTOSE
- RAP**  
RACCORDI

## Sensori per pinze / Sensors switch for grippers

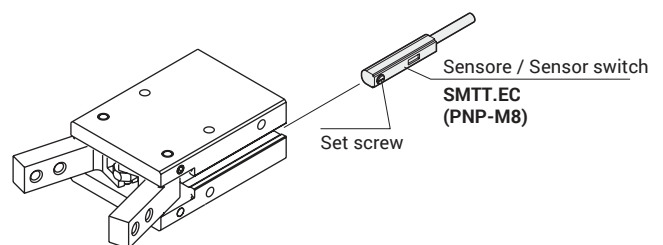
### SENSORE PER PINZE ANGOLARI **AG** / SENSOR SWITCH FOR ANGULAR GRIPPERS **AG**



### SENSORE PER PINZE PARALLELE **PG1** / SENSOR SWITCH FOR PARALLEL GRIPPERS **PG1**



### SENSORE PER PINZE PARALLELE **PG2** / SENSOR SWITCH FOR PARALLEL GRIPPERS **PG2**



**QC**

CAMBIO RAPIDO

**BP**

INTERFACCE

**SQ**

TRAVI QUADRE

**NUT**

DADI

**TB**

PROFILI

**CC**

STAFFE ANGOLARI TRAVI

**SFP**

PIASTRE DI FISSAGGIO

**MB**

MODULI PER STRUTTURA  
E FISSAGGIO

**CL · EA**

GOMITI CON CRAVATTA

**DS**

DISTRIBUTORI

**LVC · EAV · AVL**

GAMBI E GOMITI  
PER VENTOSA

**CNT**

PINZE MATEROZZA

**ET**

PROLUNGHE

**AD**

STAFFA FISSAGGIO PINZA

**SG**

PINZE MATEROZZA

**AG**

PINZE ANGOLARI

**PG**

PINZE PARALLELE

**OFG**

PINZE PNEUMATICHE

**NB**

ATTUATORI AUTOMATICI

**W.N**

LAME STANDARD

**BH**

CORPI PORTA LAMA  
SPECIALI

**W.S**

LAME SPECIALI

**CVA**

CILINDRO ANTIROTAZIONE

**SR - SA - SS**

COMPENSATORI

**V - SV**

VENTOSE

**RAP**

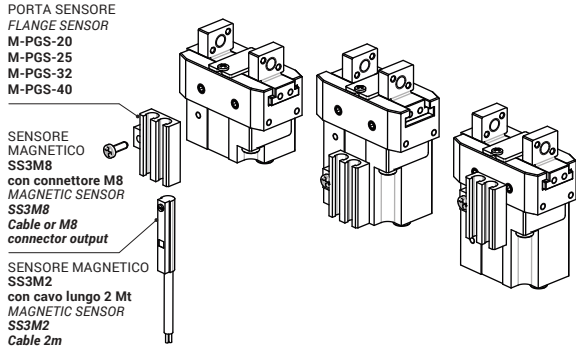
RACCORDI

# SENSORI

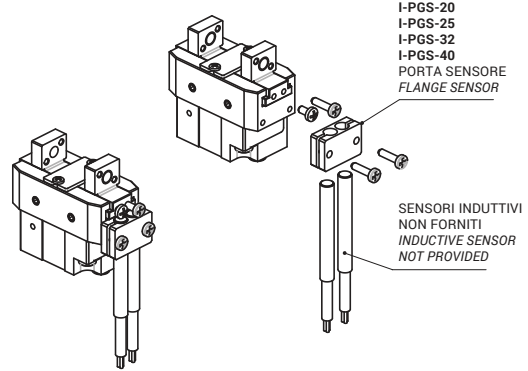
## Sensori per pinze / Sensors switch for grippers

### SENSORE PER PINZE PARALLELE COMPATTE PGS / SENSOR SWITCH FOR PARALLEL GRIPPERS PGS

#### Kit fissaggio sensori magnetici / Magnetic sensor fixing kit

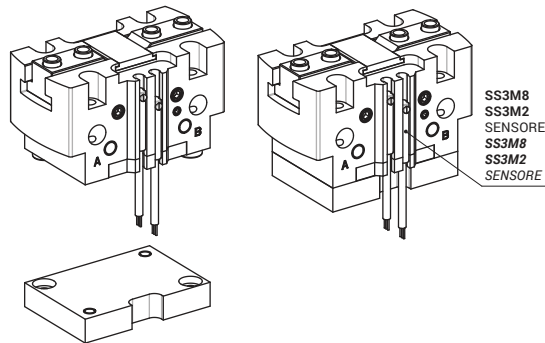


#### Kit fissaggio sensori induttivi / Sensor fixing kit

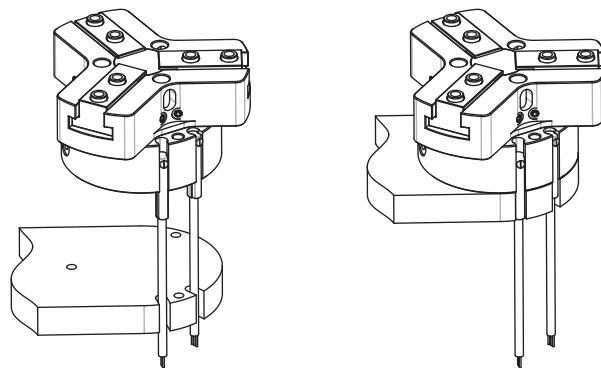


### SENSORE PER PINZE PARALLELE CON GUIDA A T PGD / SENSOR SWITCH FOR PARALLEL GRIPPERS PGD

Esempio di montaggio sensori  
mod. **SS3M8** o mod. **SS3M2**  
Per poter alloggiare correttamente il sensore,  
va eseguito uno scasso nella base.



Esempio di montaggio sensori  
mod. **SS3M8** o mod. **SS3M2**  
Per poter alloggiare correttamente il sensore,  
va eseguito uno scasso nella base.



### SENSORE PER PINZE A TRE GRIFFE PGT / SENSOR SWITCH FOR 3 JAWS GRIPPERS PGT

**QC**  
CAMBIO RAPIDO

**BP**  
INTERFACCE

**SQ**  
TRAVI QUADRE

**NUT**  
DADI

**TB**  
PROFILI

**CC**  
STAFFE ANGOLARI TRAVI

**SFP**  
PIASTRE DI FISSAGGIO

**MB**  
MODULI PER STRUTTURA  
E FISSAGGIO

**CL - EA**  
GOMITI CON CRAVATTA

**DS**  
DISTRIBUTORI

**LVC - EAV - AVL**  
GAMBI E GOMITI  
PER VENTOSA

**CNT**  
PINZE MATEROZZA

**ET**  
PROLUNGHE

**AD**  
STAFFA FISSAGGIO PINZA

**SG**  
PINZE MATEROZZA

**AG**  
PINZE ANGOLARI

**PG**  
PINZE PARALLELE

**OFG**  
PINZE PNEUMATICHE

**NB**  
ATTUATORI AUTOMATICI

**W.N**  
LAME STANDARD

**BH**  
CORPI PORTA LAMA  
SPECIALI

**W.S**  
LAME SPECIALI

**CVA**  
CILINDRO ANTIROTAZIONE

**SR - SA - SS**  
COMPENSATORI

**V - SV**  
VENTOSE

**RAP**  
RACCORDI