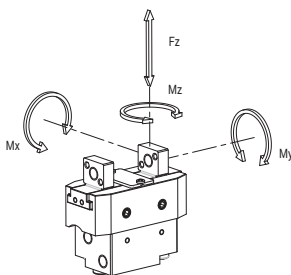
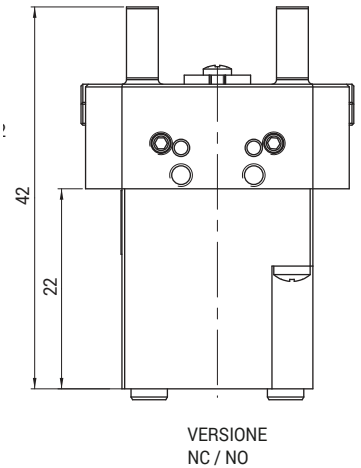
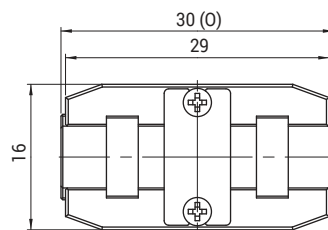
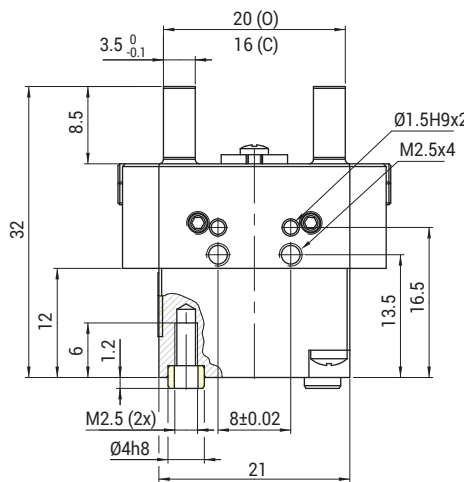
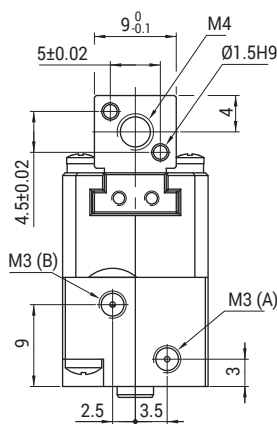
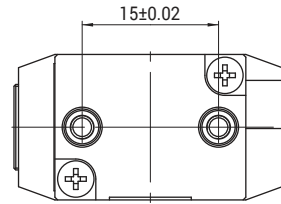


## Pinze parallele compatte / Parallel grippers



Fz s, Mx s, My s, Mz s =  
Carichi ammissibili / Maximum  
admissible loads and torques  
Fz d, Mx d, My d, Mz d =  
Carichi ammissibili in situazione  
dinamica / Maximum admissible  
loads and torques

ARTICOLO / ARTICLE	Fz s (N)	Mx s (Nm)	My s (Nm)	Mz s (Nm)	Fz d (N)	Mx d (Nm)	My d (Nm)	Mz d (Nm)
PGS-20	36	1.2	1.2	1.2	0.4	1.2	1.2	1.2

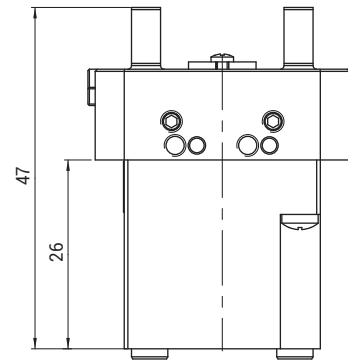
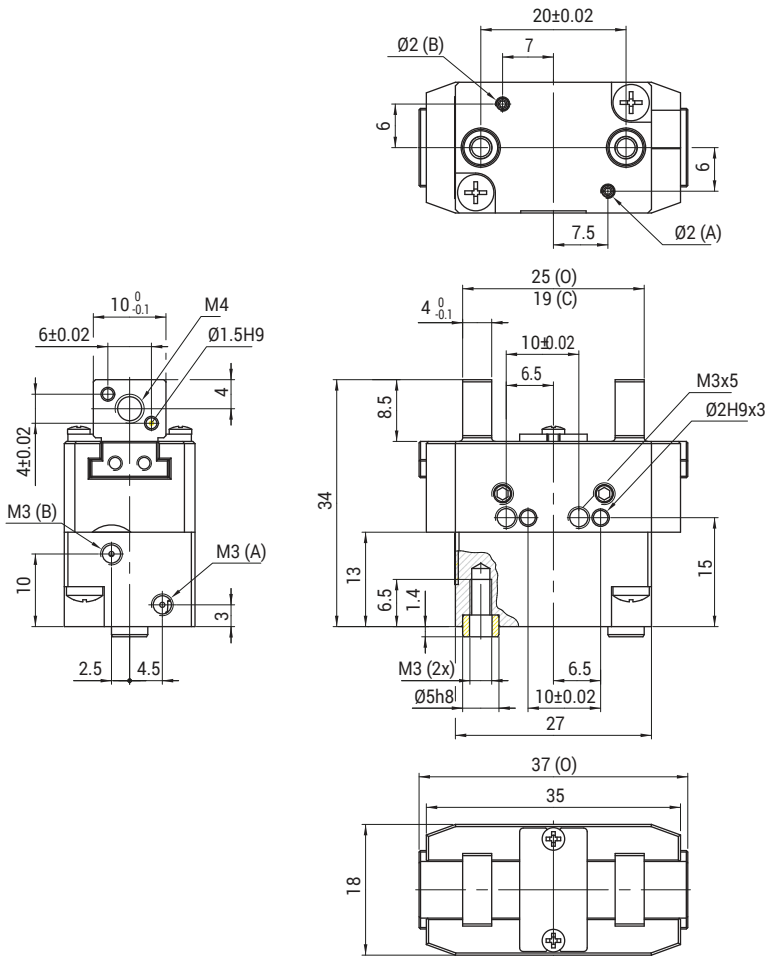
ARTICOLO / ARTICLE	PRESSIONE DI ESERCIZIO / PRESSURE RANGE	TEMPERATURA DI ESERCIZIO / TEMPERATURE RANGE	CORSA PER GRIFFA / STROKE FOR JAW [mm]	FORZA DI SERRAGGIO / TOTAL FORCE AT 6 BAR	± RIPETIBILITÀ / ---	MATERIALE / MATERIAL	PESO / WEIGHT
PGS-20	~2 ÷ 8 bar	-5~+60°C	2	36 (N)	0.02	Alluminio / Aluminium	34 g
PGS-20-NC	~4 ÷ 8 bar	-5~+60°C	2	46 (N)	0.02	Alluminio / Aluminium	42 g
PGS-20-NO	~4 ÷ 8 bar	-5~+60°C	2	30 (N)	0.02	Alluminio / Aluminium	40 g

- QC**  
CAMBIO RAPIDO
- BP**  
INTERFACCE
- SQ**  
TRAVI QUADRE
- NUT**  
DADI
- TB**  
PROFILI
- CC**  
STAFFE ANGOLARI TRAVI
- SFP**  
PIASTRE DI FISSAGGIO
- MB**  
MODULI PER STRUTTURA E FISSAGGIO
- CL · EA**  
GOMITI CON CRAVATTA
- DS**  
DISTRIBUTORI
- LVC · EAV · AVL**  
GAMBI E GOMITI PER VENTOSA
- CNT**  
PINZE MATEROZZA
- ET**  
PROLUNGHE
- AD**  
STAFFA FISSAGGIO PINZA
- SG**  
PINZE MATEROZZA
- AG**  
PINZE ANGOLARI
- PG**  
PINZE PARALLELE
- OFG**  
PINZE PNEUMATICHE
- NB**  
ATTUATORI AUTOMATICI
- W.N**  
LAME STANDARD
- BH**  
CORPI PORTA LAMA SPECIALI
- W.S**  
LAME SPECIALI
- CVA**  
CILINDRO ANTIROTAZIONE
- SR - SA - SS**  
COMPENSATORI
- V - SV**  
VENTOSE
- RAP**  
RACCORDI

# PGS-25

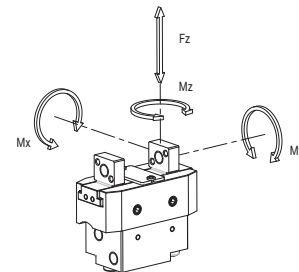


## Pinze parallele compatte / Parallel grippers



VERSIONE NC / NO

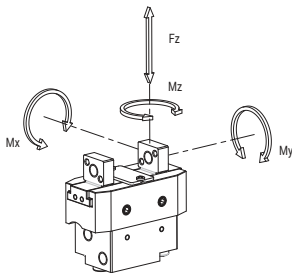
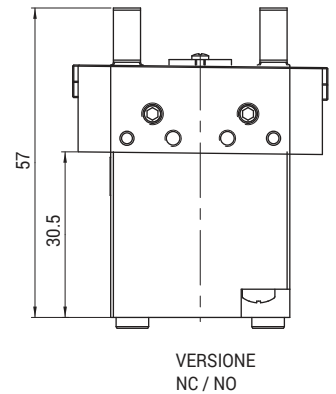
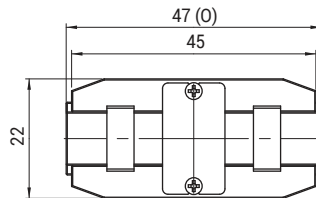
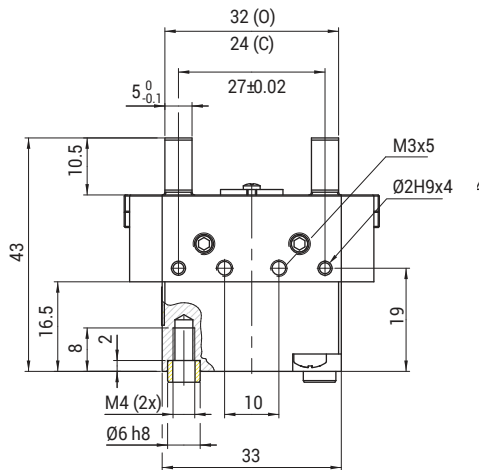
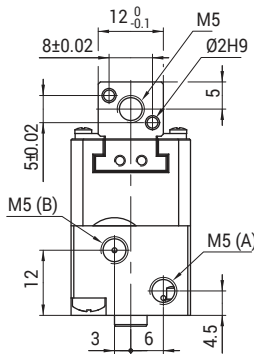
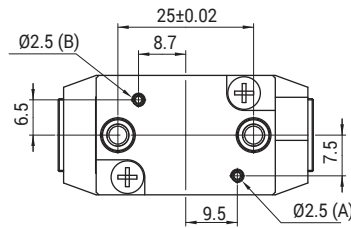
Fz s, Mx s, My s, Mz s =  
Carichi ammissibili / Maximum  
admissible loads and torques  
Fz d, Mx d, My d, Mz d =  
Carichi ammissibili in situazione  
dinamica / Maximum admissible  
loads and torques



ARTICOLO ARTICLE	Fz s (N)	Mx s (Nm)	My s (Nm)	Mz s (Nm)	Fz d (N)	Mx d (Nm)	My d (Nm)	Mz d (Nm)
PGS-25	60	2.4	2.4	2.4	0.6	2.4	2.4	2.4
ARTICOLO ARTICLE	PRESSIONE DI ESERCIZIO PRESSURE RANGE	TEMPERATURA DI ESERCIZIO TEMPERATURE RANGE	CORSA PER GRIFFA STROKE FOR JAW [mm]	FORZA DI SERRAGGIO TOTAL FORCE AT 6 BAR	± RIPETIBILITÀ ---	MATERIALE MATERIAL	PESO WEIGHT	
PGS-25	~2 ÷ 8 bar	-5~+60°C	3	70 (N)	0.02	Alluminio / Aluminium	51 g	
PGS-25-NC	~4 ÷ 8 bar	-5~+60°C	3	86 (N)	0.02	Alluminio / Aluminium	66 g	
PGS-25-NO	~4 ÷ 8 bar	-5~+60°C	3	62 (N)	0.02	Alluminio / Aluminium	61 g	

- QC**  
CAMBIO RAPIDO
- BP**  
INTERFACCIE
- SQ**  
TRAVI QUADRE
- NUT**  
DADI
- TB**  
PROFILI
- CC**  
STAFFE ANGOLARI TRAVI
- SFP**  
PIASTRE DI FISSAGGIO
- MB**  
MODULI PER STRUTTURA E FISSAGGIO
- CL - EA**  
GOMITI CON CRAVATTA
- DS**  
DISTRIBUTORI
- LVC - EAV - AVL**  
GAMBI E GOMITI PER VENTOSA
- CNT**  
PINZE MATEROZZA
- ET**  
PROLUNGHE
- AD**  
STAFFA FISSAGGIO PINZA
- SG**  
PINZE MATEROZZA
- AG**  
PINZE ANGOLARI
- PG**  
PINZE PARALLELE
- OFG**  
PINZE PNEUMATICHE
- NB**  
ATTUATORI AUTOMATICI
- W.N**  
LAME STANDARD
- BH**  
CORPI PORTA LAMA SPECIALI
- W.S**  
LAME SPECIALI
- CVA**  
CILINDRO ANTIROTAZIONE
- SR - SA - SS**  
COMPENSATORI
- V - SV**  
VENTOSE
- RAP**  
RACCORDI

## Pinze parallele compatte / Parallel grippers



Fz s, Mx s, My s, Mz s =  
Carichi ammissibili / Maximum  
admissible loads and torques  
Fz d, Mx d, My d, Mz d =  
Carichi ammissibili in situazione  
dinamica / Maximum admissible  
loads and torques

ARTICOLO / ARTICLE	Fz s (N)	Mx s (Nm)	My s (Nm)	Mz s (Nm)	Fz d (N)	Mx d (Nm)	My d (Nm)	Mz d (Nm)
PGS-32	84	4.8	4.8	4.8	0.9	4.8	4.8	4.8

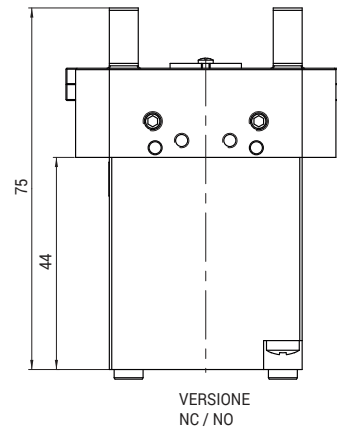
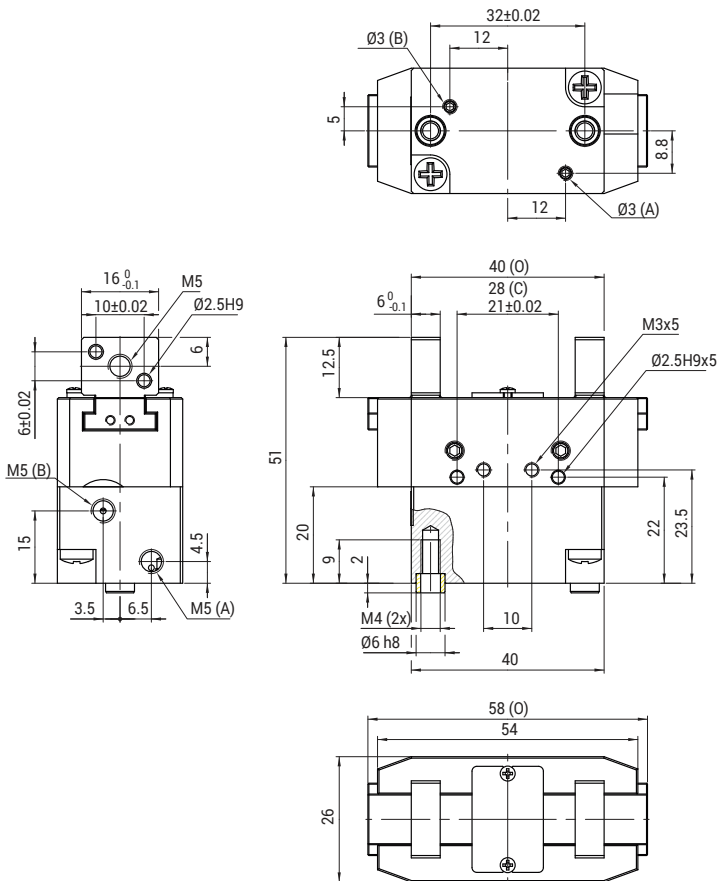
ARTICOLO / ARTICLE	PRESSIONE DI ESERCIZIO / PRESSURE RANGE	TEMPERATURA DI ESERCIZIO / TEMPERATURE RANGE	CORSA PER GRIFFA / STROKE FOR JAW [mm]	FORZA DI SERRAGGIO / TOTAL FORCE AT 6 BAR	± RIPETIBILITÀ / ---	MATERIALE / MATERIAL	PESO / WEIGHT
PGS-32	~2 ÷ 8 bar	-5~+60°C	4	104 (N)	0.02	Alluminio / Aluminium	99 g
PGS-32-NC	~4 ÷ 8 bar	-5~+60°C	4	126 (N)	0.02	Alluminio / Aluminium	126 g
PGS-32-NO	~4 ÷ 8 bar	-5~+60°C	4	88 (N)	0.02	Alluminio / Aluminium	120 g

- QC**  
CAMBIO RAPIDO
- BP**  
INTERFACCE
- SQ**  
TRAVI QUADRE
- NUT**  
DADI
- TB**  
PROFILI
- CC**  
STAFFE ANGOLARI TRAVI
- SFP**  
PIASTRE DI FISSAGGIO
- MB**  
MODULI PER STRUTTURA E FISSAGGIO
- CL - EA**  
GOMITI CON CRAVATTA
- DS**  
DISTRIBUTORI
- LVC - EAV - AVL**  
GAMBI E GOMITI PER VENTOSA
- CNT**  
PINZE MATEROZZA
- ET**  
PROLUNGHE
- AD**  
STAFFA FISSAGGIO PINZA
- SG**  
PINZE MATEROZZA
- AG**  
PINZE ANGOLARI
- PG**  
PINZE PARALLELE
- OFG**  
PINZE PNEUMATICHE
- NB**  
ATTUATORI AUTOMATICI
- W.N**  
LAME STANDARD
- BH**  
CORPI PORTA LAMA SPECIALI
- W.S**  
LAME SPECIALI
- CVA**  
CILINDRO ANTIROTAZIONE
- SR - SA - SS**  
COMPENSATORI
- V - SV**  
VENTOSE
- RAP**  
RACCORDI

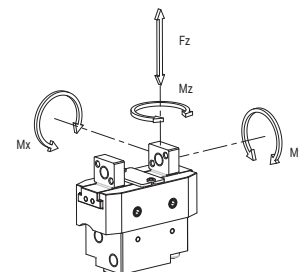
# PGS-40



## Pinze parallele compatte / Parallel grippers



Fz s, Mx s, My s, Mz s =  
Carichi ammissibili / Maximum  
admissible loads and torques  
Fz d, Mx d, My d, Mz d =  
Carichi ammissibili in situazione  
dinamica / Maximum admissible  
loads and torques



ARTICOLO / ARTICLE	Fz s (N)	Mx s (Nm)	My s (Nm)	Mz s (Nm)	Fz d (N)	Mx d (Nm)	My d (Nm)	Mz d (Nm)
PGS-40	144	7.2	7.2	7.2	1.5	7.2	7.2	7.2
ARTICOLO / ARTICLE	PRESSIONE DI ESERCIZIO / PRESSURE RANGE	TEMPERATURA DI ESERCIZIO / TEMPERATURE RANGE	CORSA PER GRIFFA / STROKE FOR JAW [mm]	FORZA DI SERRAGGIO / TOTAL FORCE AT 6 BAR	± RIPETIBILITÀ / ---	MATERIALE / MATERIAL	PESO / WEIGHT	
PGS-40	~2 ÷ 8 bar	-5~+60°C	6	154 (N)	0.02	Alluminio / Aluminium	163 g	
PGS-40-NC	~4 ÷ 8 bar	-5~+60°C	6	188 (N)	0.02	Alluminio / Aluminium	238 g	
PGS-40-NO	~4 ÷ 8 bar	-5~+60°C	6	124 (N)	0.02	Alluminio / Aluminium	219 g	

- QC**  
CAMBIO RAPIDO
- BP**  
INTERFACCIE
- SQ**  
TRAVI QUADRE
- NUT**  
DADI
- TB**  
PROFILI
- CC**  
STAFFE ANGOLARI TRAVI
- SFP**  
PIASTRE DI FISSAGGIO
- MB**  
MODULI PER STRUTTURA E FISSAGGIO
- CL - EA**  
GOMITI CON CRAVATTA
- DS**  
DISTRIBUTORI
- LVC - EAV - AVL**  
GAMBI E GOMITI PER VENTOSA
- CNT**  
PINZE MATEROZZA
- ET**  
PROLUNGHE
- AD**  
STAFFA FISSAGGIO PINZA
- SG**  
PINZE MATEROZZA
- AG**  
PINZE ANGOLARI
- PG**  
PINZE PARALLELE
- OFG**  
PINZE PNEUMATICHE
- NB**  
ATTUATORI AUTOMATICI
- W.N**  
LAME STANDARD
- BH**  
CORPI PORTA LAMA SPECIALI
- W.S**  
LAME SPECIALI
- CVA**  
CILINDRO ANTIROTAZIONE
- SR - SA - SS**  
COMPENSATORI
- V - SV**  
VENTOSE
- RAP**  
RACCORDI

**QC**

CAMBIO RAPIDO

**BP**

INTERFACCE

**SQ**

TRAVI QUADRE

**NUT**

DADI

**TB**

PROFILI

**CC**

STAFFE ANGOLARI TRAVI

**SFP**

PIASTRE DI FISSAGGIO

**MB**

MODULI PER STRUTTURA  
E FISSAGGIO

**CL · EA**

GOMITI CON CRAVATTA

**DS**

DISTRIBUTORI

**LVC · EAV · AVL**

GAMBI E GOMITI  
PER VENTOSA

**CNT**

PINZE MATEROZZA

**ET**

PROLUNGHE

**AD**

STAFFA FISSAGGIO PINZA

**SG**

PINZE MATEROZZA

**AG**

PINZE ANGOLARI

**PG**

PINZE PARALLELE

**OFG**

PINZE PNEUMATICHE

**NB**

ATTUATORI AUTOMATICI

**W.N**

LAME STANDARD

**BH**

CORPI PORTA LAMA  
SPECIALI

**W.S**

LAME SPECIALI

**CVA**

CILINDRO ANTIROTAZIONE

**SR - SA - SS**

COMPENSATORI

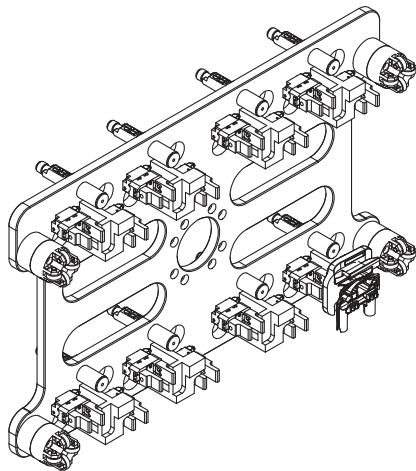
**V - SV**

VENTOSE

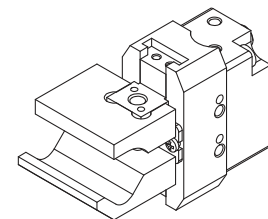
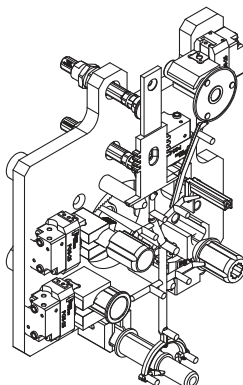
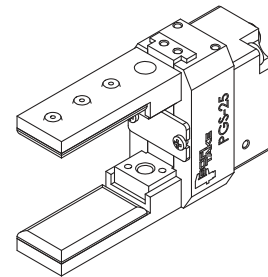
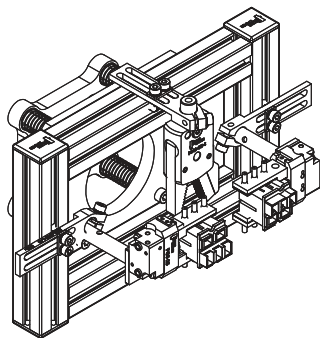
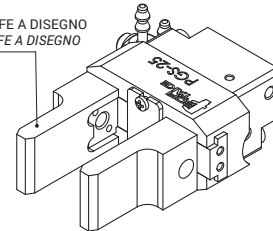
**RAP**

RACCORDI

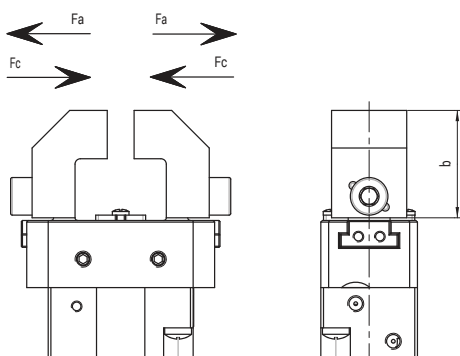
**Esempi di esecuzione costumer /  
Esempi di esecuzione costumer**



GRIFFE A DISEGNO  
GRIFFE A DISEGNO

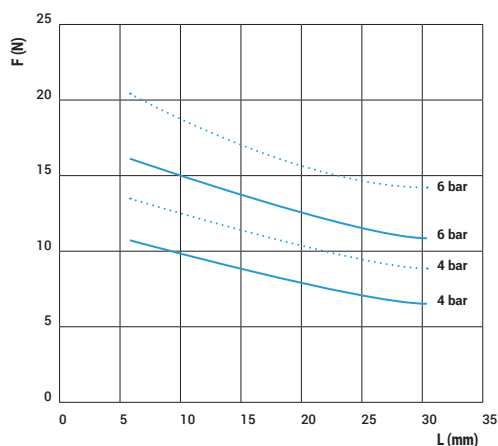


# PGS - FORZA DI SERRAGGIO PER SINGOLA GRIFFA / PGS - GRIPPING FORCE FOR SINGLE JAW

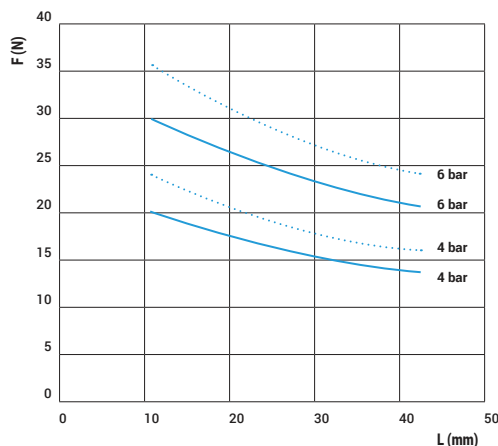


L = distanza dal punto di presa /  
distance from gripping point  
FA = forza apertura / opening force  
FC = forza chiusura / closing force  
FAM = forza apertura molla /  
opening force of the spring  
FCM = forza chiusura molla /  
closing force of the spring

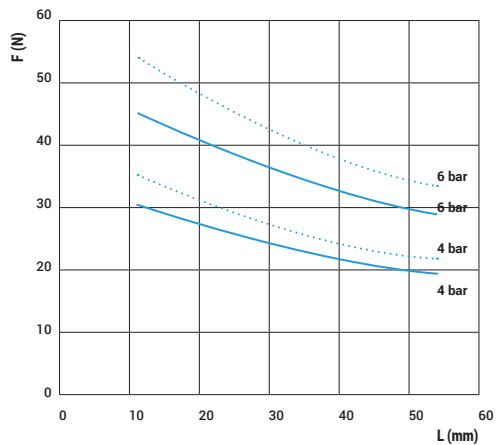
## PGS-20



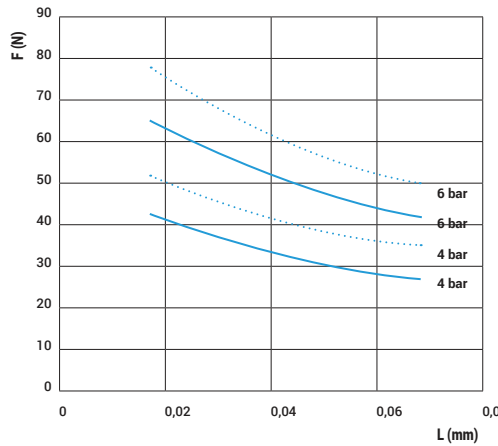
## PGS-25



## PGS-32



## PGS-40



- QC**  
CAMBIO RAPIDO
- BP**  
INTERFACCIE
- SQ**  
TRAVI QUADRE
- NUT**  
DADI
- TB**  
PROFILII
- CC**  
STAFFE ANGOLARI TRAVI
- SFP**  
PIASTRE DI FISSAGGIO
- MB**  
MODULI PER STRUTTURA E FISSAGGIO
- CL - EA**  
GOMITI CON CRAVATTA
- DS**  
DISTRIBUTORI
- LVC - EAV - AVL**  
GAMBI E GOMITI PER VENTOSA
- CNT**  
PINZE MATEROZZA
- ET**  
PROLUNGHE
- AD**  
STAFFA FISSAGGIO PINZA
- SG**  
PINZE MATEROZZA
- AG**  
PINZE ANGOLARI
- PG**  
PINZE PARALLELE
- OFG**  
PINZE PNEUMATICHE
- NB**  
ATTUATORI AUTOMATICI
- W.N**  
LAME STANDARD
- BH**  
CORPI PORTA LAMA SPECIALI
- W.S**  
LAME SPECIALI
- CVA**  
CILINDRO ANTIROTAZIONE
- SR - SA - SS**  
COMPENSATORI
- V - SV**  
VENTOSE
- RAP**  
RACCORDI