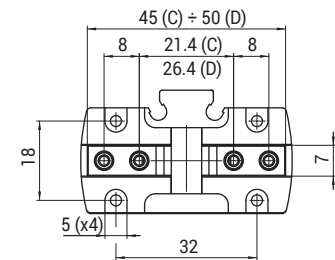
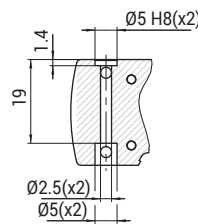
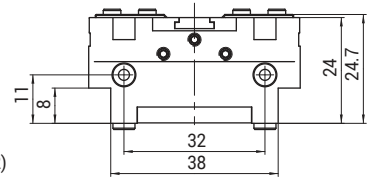
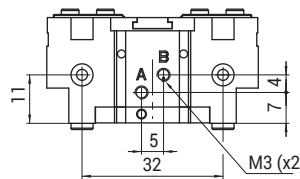
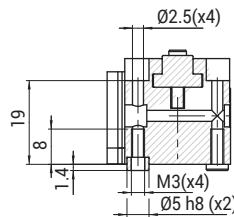
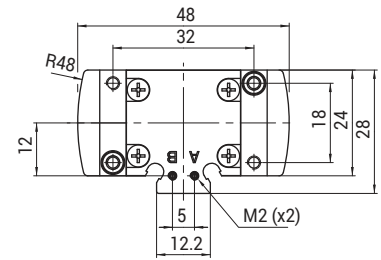
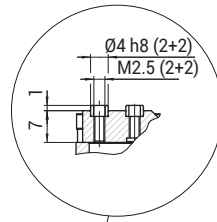
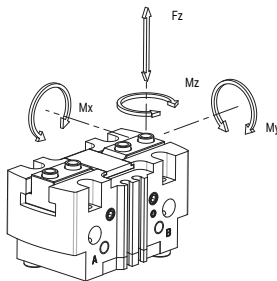
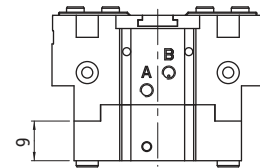


Pinze parallele con guida a T - Taglia 16 / Parallel grippers - Dimension size 16



PGD-16-NO
PGD-16-NC



Fz s, Mx s, My s, Mz s =
Carichi ammissibili / Maximum
admissible loads and torques
Fz d, Mx d, My d, Mz d =
Carichi ammissibili in situazione
dinamica / Maximum admissible
loads and torques

ARTICOLO / ARTICLE	Fz s (N)	Mx s (Nm)	My s (Nm)	Mz s (Nm)	Fz d (N)	Mx d (Nm)	My d (Nm)	Mz d (Nm)
PGD-16	200	2.5	2.5	2	2	0.06	0.06	0.06

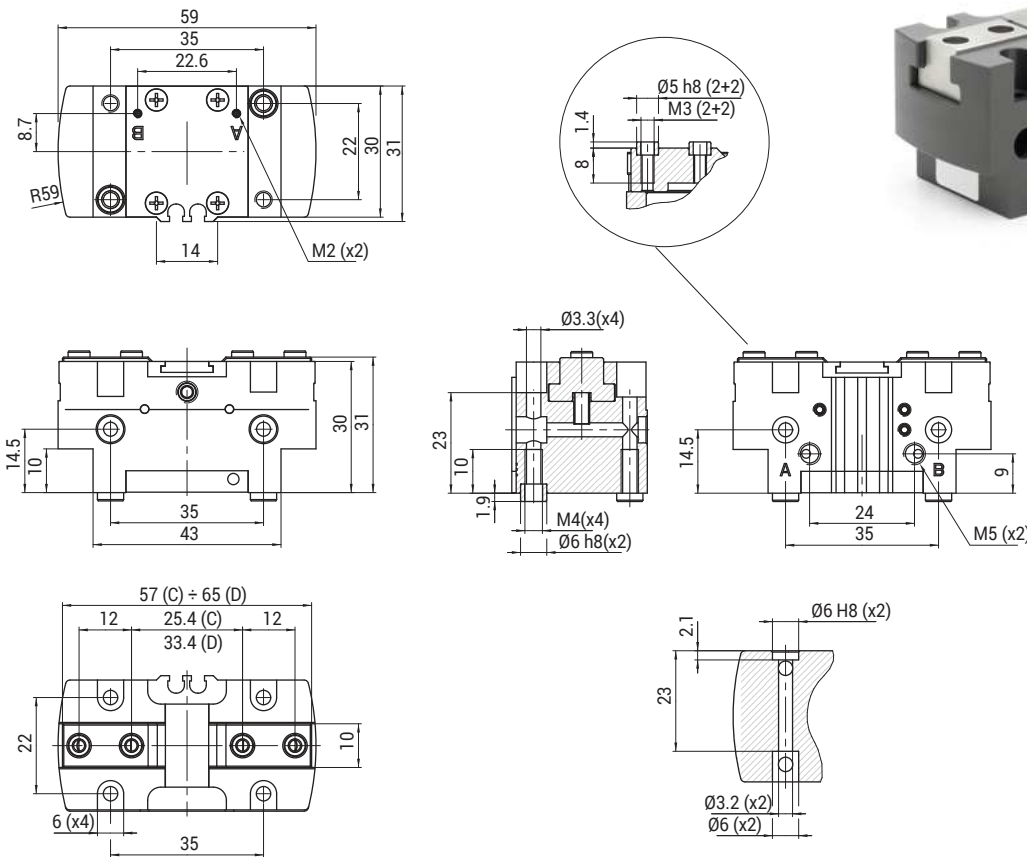
ARTICOLO / ARTICLE	PRESSIONE DI ESERCIZIO / PRESSURE RANGE	TEMPERATURA DI ESERCIZIO / TEMPERATURE RANGE	CORSA PER GRIFFA / STROKE FOR JAW [mm]	FORZA DI SERRAGGIO / TOTAL FORCE AT 6 BAR	FORZA TOTALE IN CHIUSURA / TOTAL FORCE AT 6 BAR	± RIPETIBILITÀ / ---	MATERIALE / MATERIAL	PESO / WEIGHT
PGD-16	~2 ÷ 8 bar	-5~+60°C	2.5	65 (N)	57 (N)	≤ 0.02	Alluminio / Aluminium	90 g
PGD-16-NC	~4 ÷ 8 bar	-5~+60°C	2.5	45 (N)	71 (N)	≤ 0.02	Alluminio / Aluminium	110 g
PGD-16-NO	~4 ÷ 8 bar	-5~+60°C	2.5	80 (N)	37 (N)	≤ 0.02	Alluminio / Aluminium	100 g

- QC**
CAMBIO RAPIDO
- BP**
INTERFACCE
- SQ**
TRAVI QUADRE
- NUT**
DADI
- TB**
PROFILI
- CC**
STAFFE ANGOLARI TRAVI
- SFP**
PIASTRE DI FISSAGGIO
- MB**
MODULI PER STRUTTURA E FISSAGGIO
- CL · EA**
GOMITI CON CRAVATTA
- DS**
DISTRIBUTORI
- LVC · EAV · AVL**
GAMBI E GOMITI PER VENTOSA
- CNT**
PINZE MATEROZZA
- ET**
PROLUNGHE
- AD**
STAFFA FISSAGGIO PINZA
- SG**
PINZE MATEROZZA
- AG**
PINZE ANGOLARI
- PG**
PINZE PARALLELE
- OFG**
PINZE PNEUMATICHE
- NB**
ATTUATORI AUTOMATICI
- W.N**
LAME STANDARD
- BH**
CORPI PORTA LAMA SPECIALI
- W.S**
LAME SPECIALI
- CVA**
CILINDRO ANTIROTAZIONE
- SR - SA - SS**
COMPENSATORI
- V - SV**
VENTOSE
- RAP**
RACCORDI

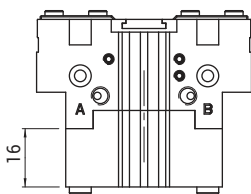
PGD-20



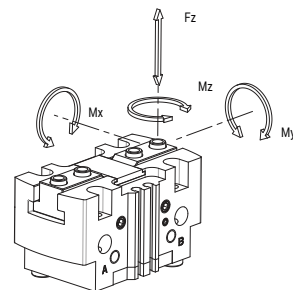
Pinze parallele con guida a T - Taglia 20 / Parallel grippers - Dimension size 20



PGD-20-NO
PGD-20-NC



Fz s, Mx s, My s, Mz s =
Carichi ammissibili / Maximum
admissible loads and torques
Fz d, Mx d, My d, Mz d =
Carichi ammissibili in situazione
dinamica / Maximum admissible
loads and torques

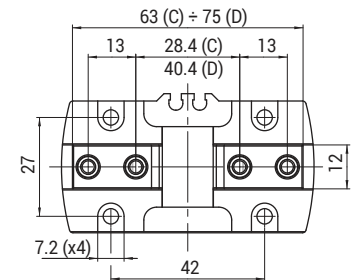
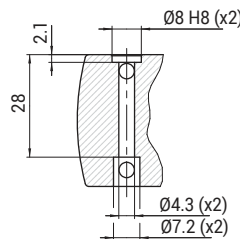
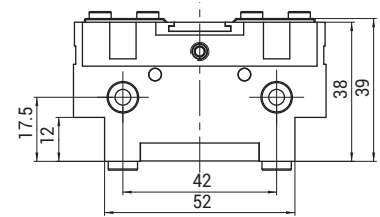
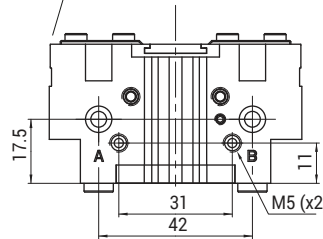
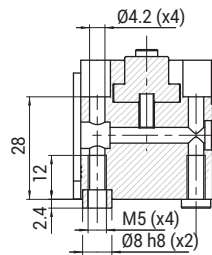
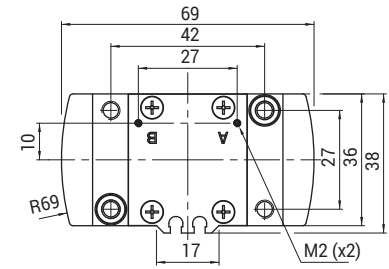
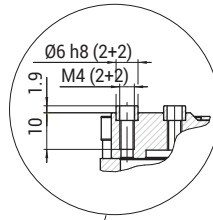


ARTICOLO / ARTICLE	Fz s (N)	Mx s (Nm)	My s (Nm)	Mz s (Nm)	Fz d (N)	Mx d (Nm)	My d (Nm)	Mz d (Nm)
PGD-20	350	5	7.5	4	4	0.12	0.06	0.06

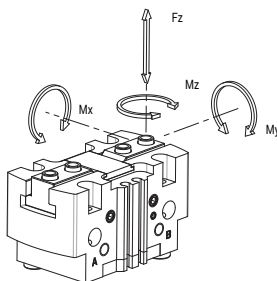
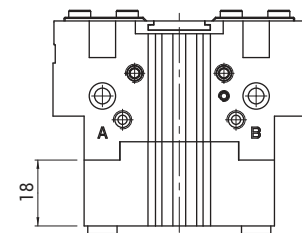
ARTICOLO / ARTICLE	PRESSIONE DI ESERCIZIO / PRESSURE RANGE	TEMPERATURA DI ESERCIZIO / TEMPERATURE RANGE	CORSA PER GRIFFA / STROKE FOR JAW [mm]	FORZA DI SERRAGGIO / TOTAL FORCE AT 6 BAR	FORZA TOTALE IN CHIUSURA / TOTAL FORCE AT 6 BAR	± RIPETIBILITÀ / ---	MATERIALE / MATERIAL	PESO / WEIGHT
PGD-20	~2 ÷ 8 bar	-5~+60°C	4	94 (N)	83 (N)	≤ 0.02	Alluminio / Aluminium	150 g
PGD-20-NC	~4 ÷ 8 bar	-5~+60°C	4	51 (N)	104 (N)	≤ 0.02	Alluminio / Aluminium	200 g
PGD-20-NO	~4 ÷ 8 bar	-5~+60°C	4	123 (N)	51 (N)	≤ 0.02	Alluminio / Aluminium	180 g

- QC**
CAMBIO RAPIDO
- BP**
INTERFACCIE
- SQ**
TRAVI QUADRE
- NUT**
DADI
- TB**
PROFILI
- CC**
STAFFE ANGOLARI TRAVI
- SFP**
PIASTRE DI FISSAGGIO
- MB**
MODULI PER STRUTTURA E FISSAGGIO
- CL - EA**
GOMITI CON CRAVATTA
- DS**
DISTRIBUTORI
- LVC - EAV - AVL**
GAMBI E GOMITI PER VENTOSA
- CNT**
PINZE MATEROZZA
- ET**
PROLUNGHE
- AD**
STAFFA FISSAGGIO PINZA
- SG**
PINZE MATEROZZA
- AG**
PINZE ANGOLARI
- PG**
PINZE PARALLELE
- OFG**
PINZE PNEUMATICHE
- NB**
ATTUATORI AUTOMATICI
- W.N**
LAME STANDARD
- BH**
CORPI PORTA LAMA SPECIALI
- W.S**
LAME SPECIALI
- CVA**
CILINDRO ANTIROTAZIONE
- SR - SA - SS**
COMPENSATORI
- V - SV**
VENTOSE
- RAP**
RACCORDI

Pinze parallele con guida a T - Taglia 25 / Parallel grippers- Dimension size 25



PGD-25-NO
PGD-25-NC



Fz s, Mx s, My s, Mz s =
Carichi ammissibili / Maximum
admissible loads and torques
Fz d, Mx d, My d, Mz d =
Carichi ammissibili in situazione
dinamica / Maximum admissible
loads and torques

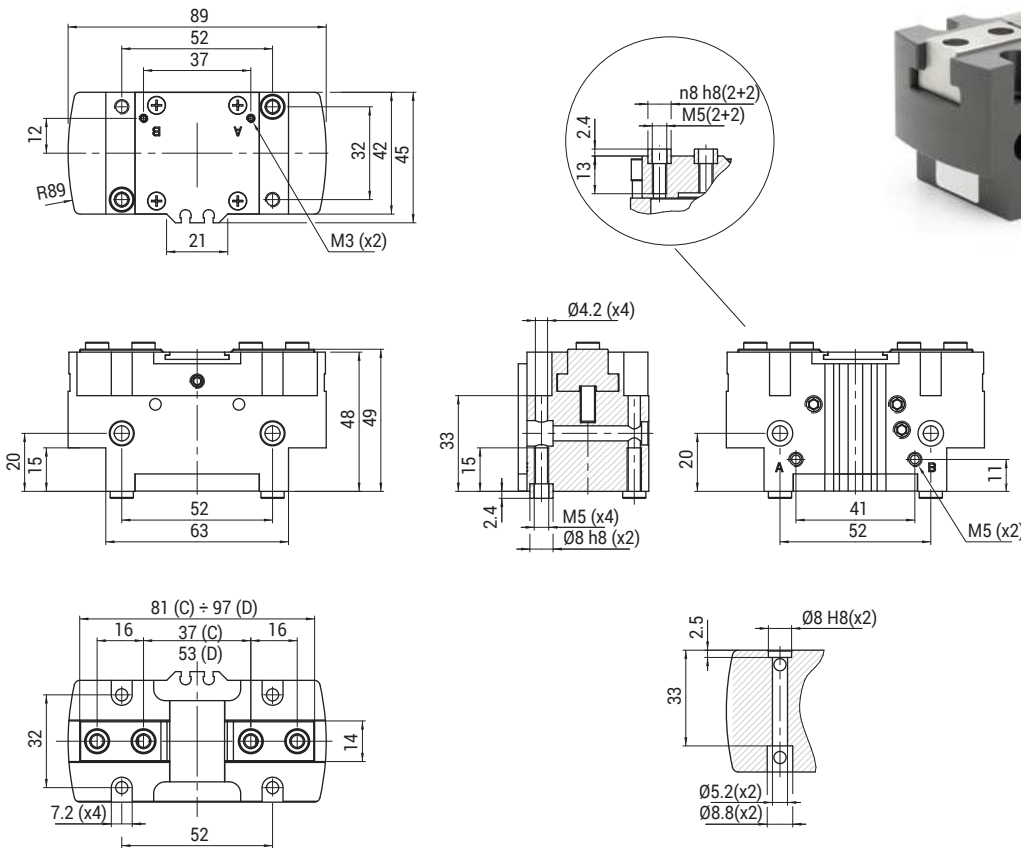
ARTICOLO / ARTICLE	Fz s (N)	Mx s (Nm)	My s (Nm)	Mz s (Nm)	Fz d (N)	Mx d (Nm)	My d (Nm)	Mz d (Nm)
PGD-25	600	8	13	6.5	6	0.25	0.25	0.25

ARTICOLO / ARTICLE	PRESSIONE DI ESERCIZIO / PRESSURE RANGE	TEMPERATURA DI ESERCIZIO / TEMPERATURE RANGE	CORSA PER GRIFFA / STROKE FOR JAW [mm]	FORZA DI SERRAGGIO / TOTAL FORCE AT 6 BAR	FORZA TOTALE IN CHIUSURA / TOTAL FORCE AT 6 BAR	± RIPETIBILITÀ / ---	MATERIALE / MATERIAL	PESO / WEIGHT
PGD-25	~2 ÷ 8 bar	-5~+60°C	6	140 (N)	118 (N)	≤ 0.02	Alluminio / Aluminium	270 g
PGD-25-NC	~4 ÷ 8 bar	-5~+60°C	6	103 (N)	143 (N)	≤ 0.02	Alluminio / Aluminium	350 g
PGD-25-NO	~4 ÷ 8 bar	-5~+60°C	6	165 (N)	83 (N)	≤ 0.02	Alluminio / Aluminium	330 g

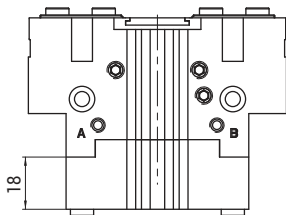
PGD-32



Pinze parallele con guida a T - Taglia 32 / Parallel grippers - Dimension size 32

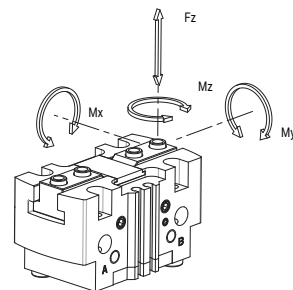


PGD-32-NO
PGD-32-NC



Fz s, Mx s, My s, Mz s =
Carichi ammissibili / Maximum
admissible loads and torques

Fz d, Mx d, My d, Mz d =
Carichi ammissibili in situazione
dinamica / Maximum admissible
loads and torques

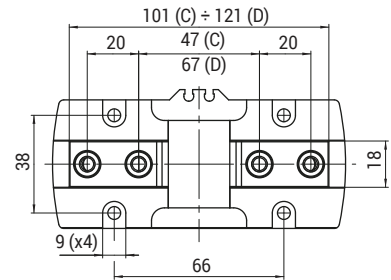
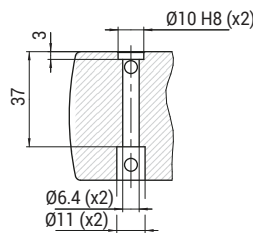
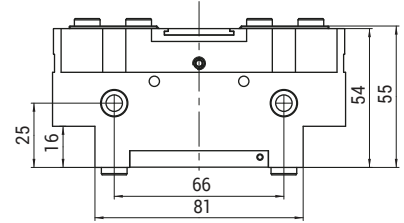
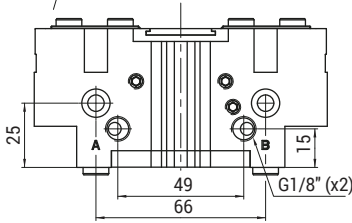
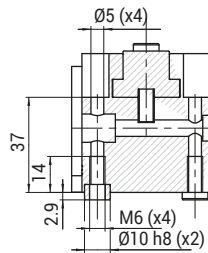
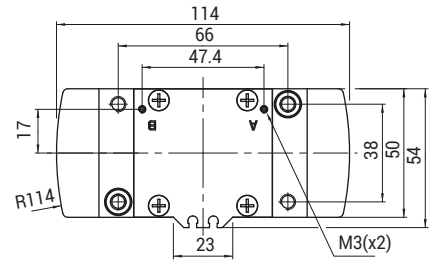
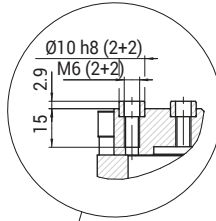


ARTICOLO / ARTICLE	Fz s (N)	Mx s (Nm)	My s (Nm)	Mz s (Nm)	Fz d (N)	Mx d (Nm)	My d (Nm)	Mz d (Nm)
PGD-32	900	18	30	15	9	0.5	0.5	0.5

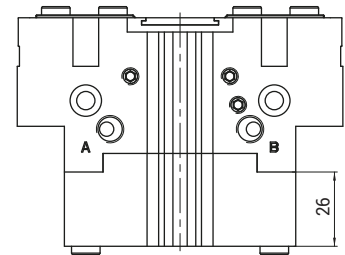
ARTICOLO / ARTICLE	PRESSIONE DI ESERCIZIO / PRESSURE RANGE	TEMPERATURA DI ESERCIZIO / TEMPERATURE RANGE	CORSA PER GRIFFA / STROKE FOR JAW [mm]	FORZA DI SERRAGGIO / TOTAL FORCE AT 6 BAR	FORZA TOTALE IN CHIUSURA / TOTAL FORCE AT 6 BAR	± RIPETIBILITÀ / ---	MATERIALE / MATERIAL	PESO / WEIGHT
PGD-32	~2 ÷ 8 bar	-5~+60°C	8	225 (N)	193 (N)	≤ 0.02	Alluminio / Aluminium	500 g
PGD-32-NC	~4 ÷ 8 bar	-5~+60°C	8	177 (N)	227 (N)	≤ 0.02	Alluminio / Aluminium	610 g
PGD-32-NO	~4 ÷ 8 bar	-5~+60°C	8	260 (N)	147 (N)	≤ 0.02	Alluminio / Aluminium	590 g

- QC**
CAMBIO RAPIDO
- BP**
INTERFACCIE
- SQ**
TRAVI QUADRE
- NUT**
DADI
- TB**
PROFILI
- CC**
STAFFE ANGOLARI TRAVI
- SFP**
PIASTRE DI FISSAGGIO
- MB**
MODULI PER STRUTTURA E FISSAGGIO
- CL · EA**
GOMITI CON CRAVATTA
- DS**
DISTRIBUTORI
- LVC · EAV · AVL**
GAMBI E GOMITI PER VENTOSA
- CNT**
PINZE MATEROZZA
- ET**
PROLUNGHE
- AD**
STAFFA FISSAGGIO PINZA
- SG**
PINZE MATEROZZA
- AG**
PINZE ANGOLARI
- PG**
PINZE PARALLELE
- OFG**
PINZE PNEUMATICHE
- NB**
ATTUATORI AUTOMATICI
- W.N**
LAME STANDARD
- BH**
CORPI PORTA LAMA SPECIALI
- W.S**
LAME SPECIALI
- CVA**
CILINDRO ANTIROTAZIONE
- SR - SA - SS**
COMPENSATORI
- V - SV**
VENTOSE
- RAP**
RACCORDI

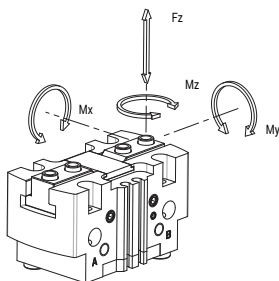
Pinze parallele con guida a T - Taglia 40 / Parallel grippers - Dimension size 40



PGD-40-NO
PGD-40-NC



Fz s, Mx s, My s, Mz s =
Carichi ammissibili / Maximum
admissible loads and torques
Fz d, Mx d, My d, Mz d =
Carichi ammissibili in situazione
dinamica / Maximum admissible
loads and torques



ARTICOLO / ARTICLE	Fz s (N)	Mx s (Nm)	My s (Nm)	Mz s (Nm)	Fz d (N)	Mx d (Nm)	My d (Nm)	Mz d (Nm)
PGD-40	1500	40	60	30	15	1	1	1

ARTICOLO / ARTICLE	PRESSIONE DI ESERCIZIO / PRESSURE RANGE	TEMPERATURA DI ESERCIZIO / TEMPERATURE RANGE	CORSA PER GRIFFA / STROKE FOR JAW [mm]	FORZA DI SERRAGGIO / TOTAL FORCE AT 6 BAR	FORZA TOTALE IN CHIUSURA / TOTAL FORCE AT 6 BAR	± RIPETIBILITÀ / ---	MATERIALE / MATERIAL	PESO / WEIGHT
PGD-40	~2 ÷ 8 bar	-5~+60°C	10	360 (N)	335 (N)	≤ 0.02	Alluminio / Aluminium	830 g
PGD-40-NC	~4 ÷ 8 bar	-5~+60°C	10	252 (N)	390 (N)	≤ 0.02	Alluminio / Aluminium	1200 g
PGD-40-NO	~4 ÷ 8 bar	-5~+60°C	10	413 (N)	223 (N)	≤ 0.02	Alluminio / Aluminium	1100 g

- QC**
CAMBIO RAPIDO
- BP**
INTERFACCE
- SQ**
TRAVI QUADRE
- NUT**
DADI
- TB**
PROFILI
- CC**
STAFFE ANGOLARI TRAVI
- SFP**
PIASTRE DI FISSAGGIO
- MB**
MODULI PER STRUTTURA E FISSAGGIO
- CL · EA**
GOMITI CON CRAVATTA
- DS**
DISTRIBUTORI
- LVC · EAV · AVL**
GAMBI E GOMITI PER VENTOSA
- CNT**
PINZE MATEROZZA
- ET**
PROLUNGHE
- AD**
STAFFA FISSAGGIO PINZA
- SG**
PINZE MATEROZZA
- AG**
PINZE ANGOLARI
- PG**
PINZE PARALLELE
- OFG**
PINZE PNEUMATICHE
- NB**
ATTUATORI AUTOMATICI
- W.N**
LAME STANDARD
- BH**
CORPI PORTA LAMA SPECIALI
- W.S**
LAME SPECIALI
- CVA**
CILINDRO ANTIROTAZIONE
- SR - SA - SS**
COMPENSATORI
- V - SV**
VENTOSE
- RAP**
RACCORDI

PGD - FORZA DI SERRAGGIO PER SINGOLA GRIFFA / PGD - GRIPPING FORCE FOR SINGLE JAW

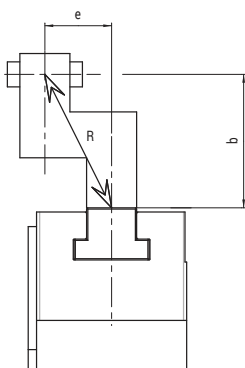


Forza di serraggio calcolata nel seguente modo:
F_c totale = F_c x 2

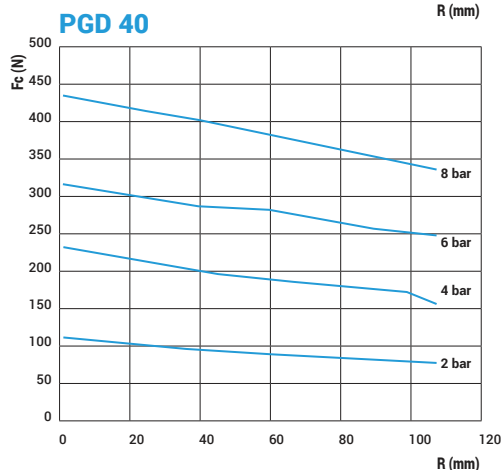
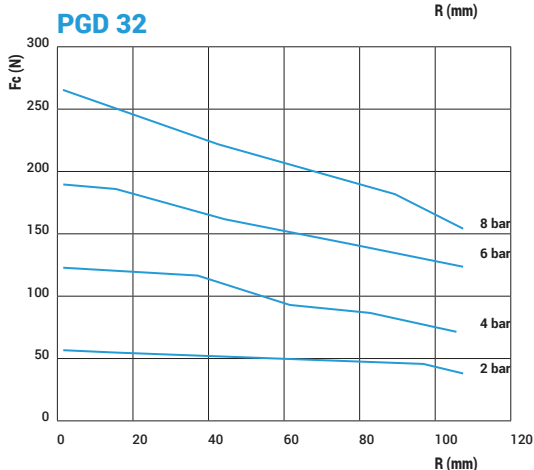
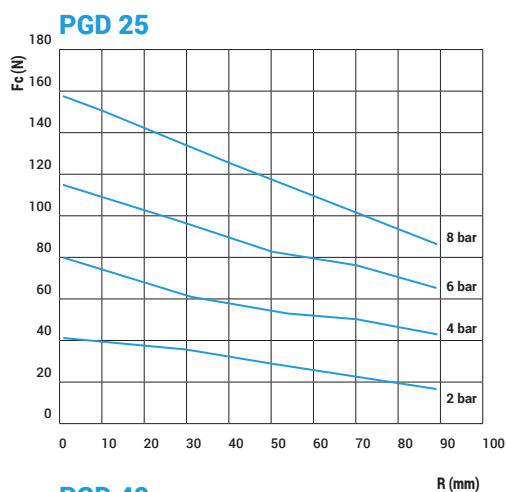
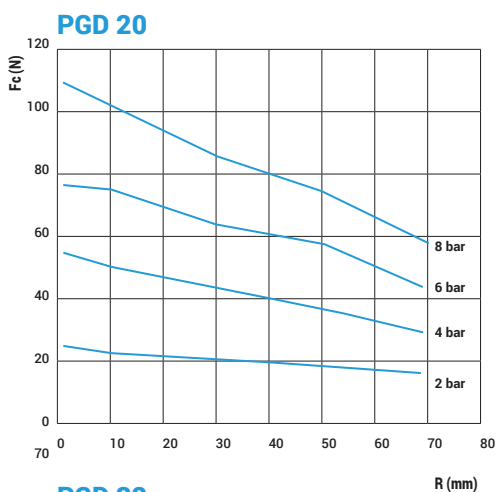
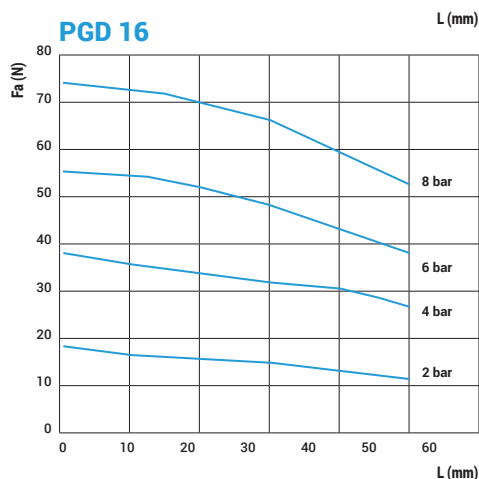
Forza di presa in funzione del braccio di leva (R) e dell'eccentricità (b, e)
 $R = \sqrt{b^2 + e^2}$

The total gripping force has to be calculated as follows total
F_c = F_c x 2

Gripping force in relation to the level arm (R) and the eccentricity (b, e)
R = $\sqrt{b^2 + e^2}$ formula



R = Braccio di leva
F_c = Forza di presa in chiusura
F_a (Forza di presa in apertura) = F_c + 10%
R = Lever arm
F_c = Closing gripping force
F_a (Opening gripping force) = F_c + 10%



- QC**
CAMBIO RAPIDO
- BP**
INTERFACCIE
- SQ**
TRAVI QUADRE
- NUT**
DADI
- TB**
PROFILI
- CC**
STAFFE ANGOLARI TRAVI
- SFP**
PIASTRE DI FISSAGGIO
- MB**
MODULI PER STRUTTURA E FISSAGGIO
- CL - EA**
GOMITI CON CRAVATTA
- DS**
DISTRIBUTORI
- LVC - EAV - AVL**
GAMBI E GOMITI PER VENTOSA
- CNT**
PINZE MATEROZZA
- ET**
PROLUNGHE
- AD**
STAFFA FISSAGGIO PINZA
- SG**
PINZE MATEROZZA
- AG**
PINZE ANGOLARI
- PG**
PINZE PARALLELE
- OFG**
PINZE PNEUMATICHE
- NB**
ATTUATORI AUTOMATICI
- W.N**
LAME STANDARD
- BH**
CORPI PORTA LAMA SPECIALI
- W.S**
LAME SPECIALI
- CVA**
CILINDRO ANTIROTAZIONE
- SR - SA - SS**
COMPENSATORI
- V - SV**
VENTOSE
- RAP**
RACCORDI