

QC

CAMBIO RAPIDO

BP

INTERFACCE

SQ

TRAVI QUADRE

NUT

DADI

TB

PROFILI

CC

STAFFE ANGOLARI TRAVI

SFP

PIASTRE DI FISSAGGIO

MB

MODULI PER STRUTTURA E FISSAGGIO

CL · EA

GOMITI CON CRAVATTA

DS

DISTRIBUTORI

LVC · EAV · AVL

GAMBI E GOMITI PER VENTOSA

CNT

PINZE MATEROZZA

ET

PROLUNGHE

AD

STAFFA FISSAGGIO PINZA

SG

PINZE MATEROZZA

AG

PINZE ANGOLARI

PG

PINZE PARALLELE

OFG

PINZE PNEUMATICHE

NB

ATTUATORI AUTOMATICI

W.N

LAME STANDARD

BH

CORPI PORTA LAMA SPECIALI

W.S

LAME SPECIALI

SR - SA - SS

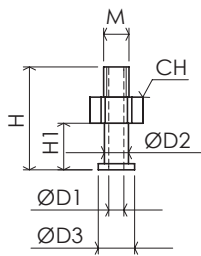
COMPENSATORI

V - SV

VENTOSE

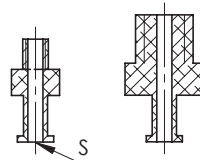
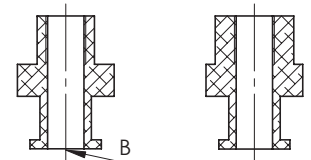
RAP

RACCORDI



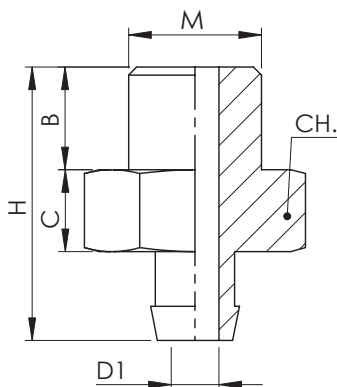
NIPPLI PER VENTOSE SERIE V / NIPPLES FOR VACUUM CUPS SERIE V

Scegliere il nipplo in accordo alla ventosa (tipo S o tipo B) e in accordo alla filettatura richiesta dal supporto. / Select the proper nipple according to the vacuum cup (S type or B type) and according to the thread of the.

SMALL

BIG


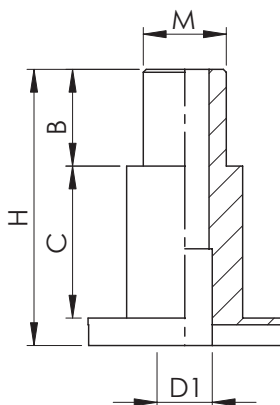
ARTICOLO ARTICLE	S/B	M	ØD1 [mm]	ØD2 [mm]	ØD3 [mm]	H [mm]	H1 [mm]	H2 [mm]	CH [mm]	HM [mm]	MATERIALE MATERIAL	PESO WEIGHT
VC01M5S	S	MG	2.5	4	6	17	7.7	6.7	8	4	Silicone / Silicon	0.8 g
VC01G18S	S	G1/8"	2.5	4	6	21	7.7	6.7	13	6.5	Silicone / Silicon	4 g
VC01G18B	B	G1/8"	6	8.5	11	22	8.7	7.2	16	6.5	Silicone / Silicon	4 g
VC01G14B	B	G1/4"	6	8.5	11	22	8.7	7.2	16	6.5	Silicone / Silicon	5.4 g

INSERTO A RESCA / INSERTO A RESCA



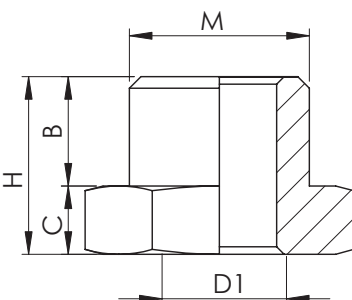
ARTICOLO ARTICLE	ØM [mm]	B [mm]	C [mm]	ØD1 [mm]	CH. [mm]	H [mm]	MATERIALE MATERIAL	PESO WEIGHT
FIM11A	G1/8"	7.5	6	3.5	14	20	Alluminio / Aluminium	4.1 g
FIM20	M3	3	2	1.4	5	12	Alluminio / Aluminium	0.4 g
FIM21	M5	4.5	5	2.5	7	16	Ottone Nichelato	3.1 g

VITI SCANALATE / VITI SCANALATE



ARTICOLO ARTICLE	ØM [mm]	B [mm]	C [mm]	ØD1 [mm]	H [mm]	MATERIALE MATERIAL	PESO WEIGHT
FIM60	M6	7	11	3.5	20	Ottone Nichelato	7.5 g
FIM80	G1/8"	8	18	6	29	Ottone Nichelato	23.7 g

ADATTATORI PER VITI SCANALATE / ADATTATORI PER VITI SCANALATE

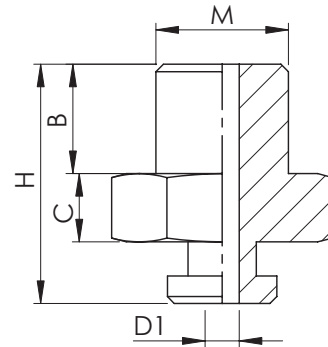


ARTICOLO ARTICLE	ØM [mm]	B [mm]	C [mm]	ØD1 [mm]	CH. [mm]	H [mm]	MATERIALE MATERIAL	PESO WEIGHT
FIM14F18	G1/4"	8	5	G1/8"	17	13	Ottone Nichelato	10.6 g
FIM18M6F	G1/8"	6	4.5	M6	13	10.5	Ottone Nichelato	6.6 g

Inserti per ventose

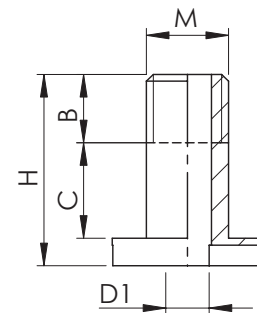
INSERTI A RESCA / INSERTI A RESCA

ARTICOLO ARTICLE	ØM [mm]	B [mm]	C [mm]	ØD1 [mm]	CH. [mm]	H [mm]	MATERIALE MATERIAL	PESO WEIGHT
FIM3VPG2	M3	3	2	1	5	7.5	Alluminio / Aluminium	0.18 g
FIM5VPG2	M5	4.5	3.5	1	7	10.5	Alluminio / Aluminium	0,61 g
FIM5VPG5	M5	4.5	3.5	2.2	7	12	Alluminio / Aluminium	0.7 g
FIM18VPG5	G1/8"	8	5	2.2	14	17	Alluminio / Aluminium	3.9 g
FIM18VPG15	G1/8"	8	5	2.2	14	17.5	Alluminio / Aluminium	4 g
FIM18VPG20	G1/8"	8	5	3	14	19.5	Alluminio / Aluminium	4.06 g
FIM18VPG25	G1/8"	8	5	4	14	21.5	Alluminio / Aluminium	4.08 g
FIM18VPG50	G1/8"	8	5	4	14	21.5	Alluminio / Aluminium	4.9 g



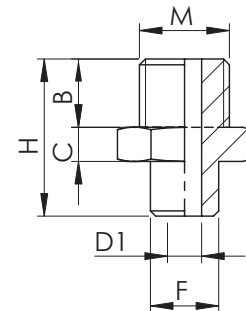
VITI SCANALATE / VITI SCANALATE

ARTICOLO ARTICLE	ØM [mm]	B [mm]	C [mm]	ØD1 [mm]	H [mm]	MATERIALE MATERIAL	PESO WEIGHT
FIM6M25	M6	6	6	3.5	14	Ottone Nichelato	2.7 g



INSERTO AVVITATO / INSERTO AVVITATO

ARTICOLO ARTICLE	ØM [mm]	B [mm]	C [mm]	ØD1 [mm]	CH. [mm]	ØF [mm]	ØH [mm]	MATERIALE MATERIAL	PESO WEIGHT
FIM14M10M	G1/4"	10	5	5	17	M10X125	23	Alluminio / Aluminium	7.5 g
FIFS12120	G1/2"	13	-	-	-	65	13	Alluminio / Aluminium	23.7 g



QC
CAMBIO RAPIDO

BP
INTERFACCE

SQ
TRAVI QUADRE

NUT
DADI

TB
PROFILI

CC
STAFFE ANGOLARI TRAVI

SFP
PIASTRE DI FISSAGGIO

MB
MODULI PER STRUTTURA
E FISSAGGIO

CL - EA
GOMITI CON CRAVATTA

DS
DISTRIBUTORI

LVC - EAV - AVL
GAMBI E GOMITI
PER VENTOSA

CNT
PINZE MATEROZZA

ET
PROLUNGHE

AD
STAFFA FISSAGGIO PINZA

SG
PINZE MATEROZZA

AG
PINZE ANGOLARI

PG
PINZE PARALLELE

OFG
PINZE PNEUMATICHE

NB
ATTUATORI AUTOMATICI

W.N
LAME STANDARD

BH
CORPI PORTA LAMA
SPECIALI

W.S
LAME SPECIALI

SR - SA - SS
COMPENSATORI

V - SV
VENTOSE

RAP
RACCORDI