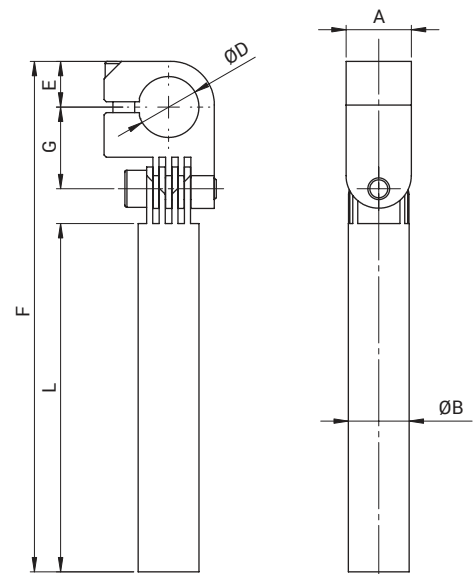


Gambo con cravatta / Clamp leg



ARTICOLO ARTICLE	A [mm]	Ø B [mm]	Ø D [mm]	E [mm]	F [mm]	G [mm]	L [mm]	MATERIALE MATERIAL	PESO WEIGHT
EA-D10-L45	12	10	10	9	79	17	45	Alluminio / Aluminium	20 g
EA-D10-L60	12	10	10	9	94	17	60	Alluminio / Aluminium	27 g
EA-D10-L90	12	10	10	9	124	17	90	Alluminio / Aluminium	35 g
EA-D14-L60	15	14	10	10,5	97	19	60	Alluminio / Aluminium	38 g
EA-D14-L80	15	14	10	10,5	117	19	80	Alluminio / Aluminium	42 g
EA-D14-L120	15	14	10	10,5	157	19	120	Alluminio / Aluminium	50 g
EA-D20-L75	15	20	20	13,5	125	28	75	Alluminio / Aluminium	75 g
EA-D20-L100	15	20	20	13,5	150	28	100	Alluminio / Aluminium	90 g
EA-D20-L150	15	20	20	13,5	200	28	150	Alluminio / Aluminium	120 g
EA-D30-L80	20	30	30	18,5	140	31,5	80	Alluminio / Aluminium	260 g
EA-D30-L140	20	30	30	18,5	200	31,5	140	Alluminio / Aluminium	300 g
EA-D30-L200	20	30	30	18,5	260	31,5	200	Alluminio / Aluminium	400 g

esempi di utilizzo / application example

