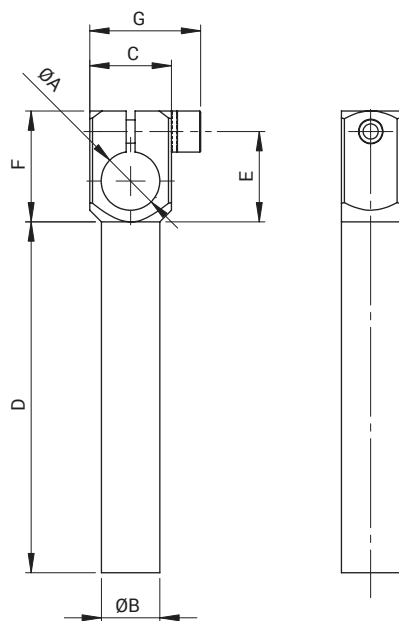
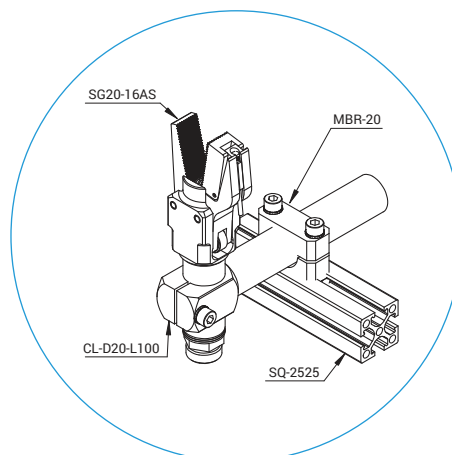
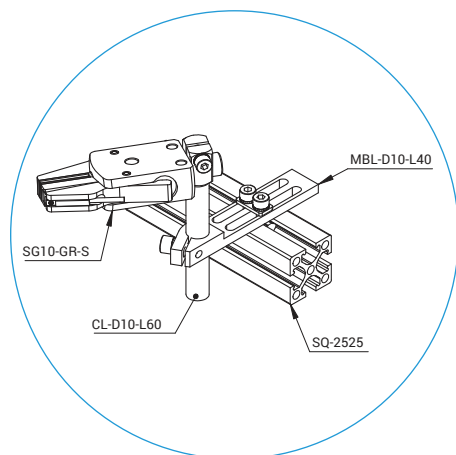


## Gambo con cravatta / Clamp leg



| ARTICOLO<br>ARTICLE | Ø A<br>[mm] | Ø B<br>[mm] | C<br>[mm] | D<br>[mm] | E<br>[mm] | F<br>[mm] | G<br>[mm] | MATERIALE<br>MATERIAL | PESO<br>WEIGHT |
|---------------------|-------------|-------------|-----------|-----------|-----------|-----------|-----------|-----------------------|----------------|
| CL-D10-L30          | 10          | 10          | 14        | 30        | 7         | 19        | 19        | Alluminio / Aluminium | 10 g           |
| CL-D10-L60          | 10          | 10          | 14        | 60        | 7         | 19        | 19        | Alluminio / Aluminium | 15 g           |
| CL-D10-L90          | 10          | 10          | 14        | 90        | 7         | 19        | 19        | Alluminio / Aluminium | 20 g           |
| CL-D14-L40          | 14          | 14          | 18        | 40        | 10        | 26        | 24        | Alluminio / Aluminium | 20 g           |
| CL-D14-L80          | 14          | 14          | 18        | 80        | 10        | 26        | 24        | Alluminio / Aluminium | 30 g           |
| CL-D14-L120         | 14          | 14          | 18        | 120       | 10        | 26        | 24        | Alluminio / Aluminium | 40 g           |
| CL-D20-L50          | 20          | 20          | 25        | 50        | 13        | 32        | 32        | Alluminio / Aluminium | 45 g           |
| CL-D20-L100         | 20          | 20          | 25        | 100       | 13        | 32        | 32        | Alluminio / Aluminium | 70 g           |
| CL-D20-L150         | 20          | 20          | 25        | 150       | 13        | 32        | 32        | Alluminio / Aluminium | 105 g          |
| CL-D30-L80          | 30          | 30          | 40        | 80        | 19        | 44        | 46        | Alluminio / Aluminium | 170 g          |
| CL-D30-L140         | 30          | 30          | 40        | 140       | 19        | 44        | 46        | Alluminio / Aluminium | 230 g          |
| CL-D30-L200         | 30          | 30          | 40        | 200       | 19        | 44        | 46        | Alluminio / Aluminium | 300 g          |

### esempi di utilizzo / application example



**QC**  
CAMBIO RAPIDO

**BP**  
INTERFACCE

**SQ**  
TRAVI QUADRE

**NUT**  
DADI

**TB**  
PROFILI

**CC**  
STAFFE ANGOLARI TRAVI

**SFP**  
PIASTRE DI FISSAGGIO

**MB**  
MODULI PER STRUTTURA  
E FISSAGGIO

**CL - EA**  
GOMITI CON CRAVATTA

**DS**  
DISTRIBUTORI

**LVC - EAV - AVL**  
GAMBI E GOMITI  
PER VENTOSA

**CNT**  
PINZE MATEROZZA

**ET**  
PROLUNGHE

**AD**  
STAFFA FISSAGGIO PINZA

**SG**  
PINZE MATEROZZA

**AG**  
PINZE ANGOLARI

**PG**  
PINZE PARALLELE

**OFG**  
PINZE PNEUMATICHE

**NB**  
ATTUATORI AUTOMATICI

**W.N**  
LAME STANDARD

**BH**  
CORPI PORTA LAMA  
SPECIALI

**W.S**  
LAME SPECIALI

**CVA**  
CILINDRO ANTIROTAZIONE

**SR - SA - SS**  
COMPENSATORI

**V - SV**  
VENTOSE

**RAP**  
RACCORDI